

Product Name: Recombinant Human CHI3L1 (C-6His)
Catalog #: PHH0402

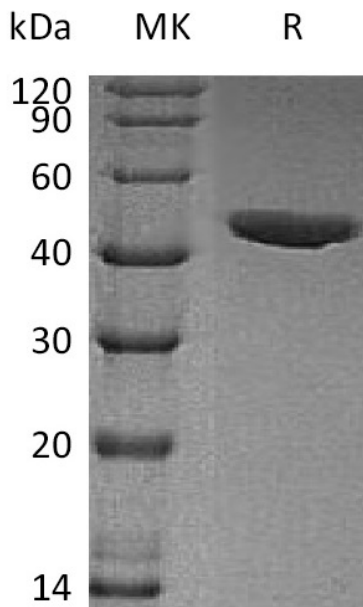


Summary

Name	Chitinase-3-like protein 1/CHI3L1
Purity	Greater than 95% as determined by reducing SDS-PAGE
Endotoxin level	<1 EU/μg as determined by LAL test.
Construction	Recombinant Human Chitinase-3-Like Protein 1 is produced by our Mammalian expression system and the target gene encoding Tyr22-Thr383 is expressed with a 6His tag at the C-terminus.
Accession #	P36222
Host	Human Cells
Species	Human
Predicted Molecular Mass	41.5 KDa
Formulation	Lyophilized from a 0.2 μm filtered solution of 20mM Tris-HCl, 300mM NaCl, 2mM EDTA, pH8.5.
Shipping	The product is shipped at ambient temperature. Upon receipt, store it immediately at the temperature listed below.
Stability&Storage	Lyophilized protein should be stored at ≤ -20°C, stable for one year after receipt. Reconstituted protein solution can be stored at 2-8°C for 2-7 days. Aliquots of reconstituted samples are stable at ≤ -20°C for 3 months.
Reconstitution	Always centrifuge tubes before opening. Do not mix by vortex or pipetting. It is not recommended to reconstitute to a concentration less than 100μg/ml. Dissolve the lyophilized protein in distilled water. Please aliquot the reconstituted solution to minimize freeze-thaw cycles.

SDS-PAGE image

Product Name: Recombinant Human CHI3L1 (C-6His)
Catalog #: PHH0402



Alternative Names

Chitinase-3-Like protein 1; 39 kDa Synovial Protein; Cartilage Glycoprotein 39; CGP-39; GP-39; hCGP-39; YKL-40; CHI3L1

Background

Chitinase-3-Like Protein 1 (CHI3L1) belongs to the glycosyl hydrolase 18 family. CHI3L1 is expressed in activated macrophages, articular chondrocytes, synovial cells as well as in liver. It lacks chitinase activity and is secreted by activated macrophages, chondrocytes, neutrophils and synovial cells. CHI3L1 is thought to play a role in defense against pathogens, or in tissue remodeling, and in the capacity of cells to respond to and cope with changes in their environment. In addition, CHI3L1 is associated with susceptibility to asthma-related traits type 7 (ASRT7) which assessed by methacholine challenge test, serum IgE levels, atopy, and atopic dermatitis.

Note

For Research Use Only , Not for Diagnostic Use.