

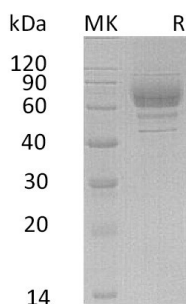
**Product Name: Recombinant Human LILRA3 (C-6His)**  
**Catalog #: PHH0376**



## Summary

<b>Name</b>	LILRA3/ILT6/CD85e/Leukocyte Ig-Like Receptor A3
<b>Purity</b>	Greater than 95% as determined by reducing SDS-PAGE
<b>Endotoxin level</b>	<1 EU/μg as determined by LAL test.
<b>Construction</b>	Recombinant Human Leukocyte Immunoglobulin-Like Receptor Subfamily A Member 3 is produced by our Mammalian expression system and the target gene encoding Thr19-Glu439 is expressed with a 6His tag at the C-terminus.
<b>Accession #</b>	AAH28208.1
<b>Host</b>	Human Cells
<b>Species</b>	Human
<b>Predicted Molecular Mass</b>	46.6 KDa
<b>Formulation</b>	Lyophilized from a 0.2 μm filtered solution of 20mM PB, 150mM NaCl, pH 7.4.
<b>Shipping</b>	The product is shipped at ambient temperature. Upon receipt, store it immediately at the temperature listed below.
<b>Stability&amp;Storage</b>	Store at ≤-70°C, stable for 6 months after receipt. Store at ≤-70°C, stable for 3 months under sterile conditions after opening. Please minimize freeze-thaw cycles.
<b>Reconstitution</b>	Always centrifuge tubes before opening. Do not mix by vortex or pipetting. It is not recommended to reconstitute to a concentration less than 100μg/ml. Dissolve the lyophilized protein in distilled water. Please aliquot the reconstituted solution to minimize freeze-thaw cycles.

## SDS-PAGE image



## Background

**Product Name: Recombinant Human LILRA3 (C-6His)**  
**Catalog #: PHH0376**

---



**Alternative Names**

Leukocyte immunoglobulin-like receptor subfamily A member 3; CD85 antigen-like family member E; Immunoglobulin-like transcript 6; ILT-6; Leukocyte immunoglobulin-like receptor 4; LIR-4 and Monocyte inhibitory receptor HM43/HM31

**Background**

Leukocyte immunoglobulin-like receptor subfamily A member 3 is also known as CD85 antigen-like family member E, Immunoglobulin-like transcript 6, ILT-6, Leukocyte immunoglobulin-like receptor 4, LIR-4 and Monocyte inhibitory receptor HM43/HM31. In humans, it is encoded by the LILRA3 gene. It acts as soluble receptor for class I MHC antigens. Binds both classical and non-classical HLA class I molecules but with reduced affinities compared to LILRB1 or LILRB2. It is detected in B-cells, natural killer (NK) cells, peripheral blood monocytes and lung.

**Note**

For Research Use Only , Not for Diagnostic Use.