

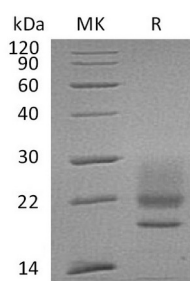
**Product Name: Recombinant Human CD83 (C-6His)**  
**Catalog #: PHH0372**



## Summary

<b>Name</b>	CD83/HB15
<b>Purity</b>	Greater than 95% as determined by reducing SDS-PAGE
<b>Endotoxin level</b>	<1 EU/μg as determined by LAL test.
<b>Construction</b>	Recombinant Human CD83 is produced by our Mammalian expression system and the target gene encoding Thr20-Ala143 is expressed with a 6His tag at the C-terminus.
<b>Accession #</b>	Q01151
<b>Host</b>	Human Cells
<b>Species</b>	Human
<b>Predicted Molecular Mass</b>	15.1 KDa
<b>Formulation</b>	Lyophilized from a 0.2 μm filtered solution of 20mM PB, 150mM NaCl, pH 7.2.
<b>Shipping</b>	The product is shipped at ambient temperature. Upon receipt, store it immediately at the temperature listed below.
<b>Stability&amp;Storage</b>	Store at ≤-70°C, stable for 6 months after receipt. Store at ≤-70°C, stable for 3 months under sterile conditions after opening. Please minimize freeze-thaw cycles.
<b>Reconstitution</b>	Always centrifuge tubes before opening. Do not mix by vortex or pipetting. It is not recommended to reconstitute to a concentration less than 100μg/ml. Dissolve the lyophilized protein in distilled water. Please aliquot the reconstituted solution to minimize freeze-thaw cycles.

## SDS-PAGE image



## Background

**Product Name: Recombinant Human CD83 (C-6His)**  
**Catalog #: PHH0372**



---

**Alternative Names**

CD83 Antigen; hCD83; B-Cell Activation Protein; Cell Surface Protein HB15; CD83

**Background**

CD83 antigen is a single-pass type I membrane protein which contains one Ig-like V-type (immunoglobulin-like) domain. CD83 is expressed by activated lymphocytes, Langerhans cells and interdigitating reticulum cells. It contains one Ig-like V-type (immunoglobulin-like) domain. , the soluble CD83 has the opposite effect and has an immune inhibitory capacity. Due to its immune inhibitory function, CD83 may play a significant role in antigen presentation or the cellular interactions that follow lymphocyte activation.

**Note**

For Research Use Only , Not for Diagnostic Use.