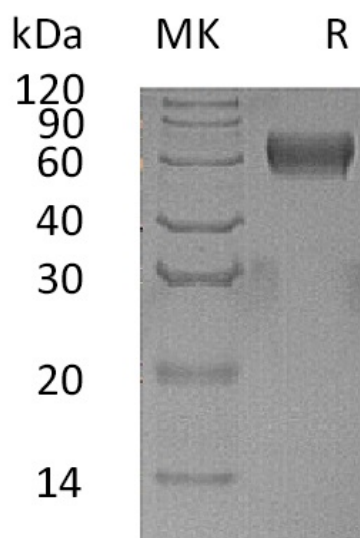


## Summary

<b>Name</b>	CD66f/PSG1/Pregnancy-specific glycoprotein 1
<b>Purity</b>	Greater than 95% as determined by reducing SDS-PAGE
<b>Endotoxin level</b>	<1 EU/μg as determined by LAL test.
<b>Construction</b>	Recombinant Human Pregnancy-specific beta-1-glycoprotein 1 is produced by our Mammalian expression system and the target gene encoding Gln35-Pro419 is expressed with a 6His tag at the C-terminus.
<b>Accession #</b>	P11464
<b>Host</b>	Human Cells
<b>Species</b>	Human
<b>Predicted Molecular Mass</b>	44.5 KDa
<b>Formulation</b>	Lyophilized from a 0.2 μm filtered solution of 20mM PB, 150mM NaCl, pH 7.4.
<b>Shipping</b>	The product is shipped at ambient temperature. Upon receipt, store it immediately at the temperature listed below.
<b>Stability&amp;Storage</b>	Store at ≤-70°C, stable for 6 months after receipt. Store at ≤-70°C, stable for 3 months under sterile conditions after opening. Please minimize freeze-thaw cycles.
<b>Reconstitution</b>	Always centrifuge tubes before opening. Do not mix by vortex or pipetting. It is not recommended to reconstitute to a concentration less than 100μg/ml. Dissolve the lyophilized protein in distilled water. Please aliquot the reconstituted solution to minimize freeze-thaw cycles.

## SDS-PAGE image

**Product Name: Recombinant Human PSG1 (C-6His)**  
**Catalog #: PHH0365**



### **Alternative Names**

Pregnancy-specific beta-1-glycoprotein 1;PSBG-1;CD66 antigen-like family member F; Fetal liver non-specific cross-reactive antigen 1/2; PSG95; Pregnancy-specific beta-1 glycoprotein C/D

### **Background**

Pregnancy-specific beta-1-glycoprotein 1(PSBG-1 for short), also named CD66 antigen-like family member F, Fetal liver non-specific cross-reactive antigen 1/2, PSG95, Pregnancy-specific beta-1 glycoprotein C/D, is a secreted protein which belongs to the immunoglobulin superfamily, CEA family. It contains 3 Ig-like C2-type (immunoglobulin-like) domains and 1 Ig-like V-type (immunoglobulin-like) domain. The human placenta is a multihormonal endocrine organ that produces hormones, enzymes, and other molecules that support fetal survival and development.

### **Note**

For Research Use Only , Not for Diagnostic Use.