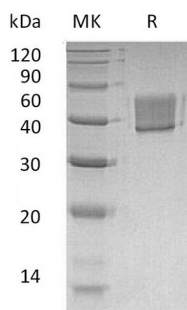


## Summary

<b>Name</b>	FCRL1/FcRH1/CD307a
<b>Purity</b>	Greater than 95% as determined by reducing SDS-PAGE
<b>Endotoxin level</b>	<1 EU/μg as determined by LAL test.
<b>Construction</b>	Recombinant Human Fc Receptor-Like Protein 1 is produced by our Mammalian expression system and the target gene encoding Ala17-Asn303 is expressed with a 6His tag at the C-terminus.
<b>Accession #</b>	Q96LA6
<b>Host</b>	Human Cells
<b>Species</b>	Human
<b>Predicted Molecular Mass</b>	32.24 KDa
<b>Formulation</b>	Lyophilized from a 0.2 μm filtered solution of 20mM PB, 150mM NaCl, 1mM EDTA, pH 7.4.
<b>Shipping</b>	The product is shipped at ambient temperature. Upon receipt, store it immediately at the temperature listed below.
<b>Stability&amp;Storage</b>	Store at ≤-70°C, stable for 6 months after receipt. Store at ≤-70°C, stable for 3 months under sterile conditions after opening. Please minimize freeze-thaw cycles.
<b>Reconstitution</b>	Always centrifuge tubes before opening. Do not mix by vortex or pipetting. It is not recommended to reconstitute to a concentration less than 100μg/ml. Dissolve the lyophilized protein in distilled water. Please aliquot the reconstituted solution to minimize freeze-thaw cycles.

## SDS-PAGE image



## Background

**Product Name: Recombinant Human FcRL1 (C-6His)**  
**Catalog #: PHH0327**



---

**Alternative Names**

Fc Receptor-Like Protein 1; FcR-Like Protein 1; FcRL1; Fc Receptor Homolog 1; FcRH1; IFGP Family Protein 1; hIFGP1; Immune Receptor Translocation-Associated Protein 5; CD307a; FCRL1; FCRH1; IFGP1; IRTA5

**Background**

Fc Receptor-Like Protein 1 (FCRL1) is a single-pass type I membrane protein that may function as an activating coreceptor in B cells. FCRL1 is primarily expressed in secondary lymphoid tissues by mature subsets of B cells. It can be detected in the spleen, lymph node, heart, skeletal muscle, kidney, liver and placenta. It is specifically expressed by mature B lineage cells with higher expression at the protein level in naive B cells compared to memory B cells. FCRL1 contains three extracellular C2-like immunoglobulin domains, a transmembrane domain, and a cytoplasmic domain with two immunoreceptor-tyrosine activation motifs and may play a role in the regulation of cancer cell growth.

**Note**

For Research Use Only , Not for Diagnostic Use.