

Product Name: Recombinant Human CD300a (C-Fc-6His)
Catalog #: PHH0324

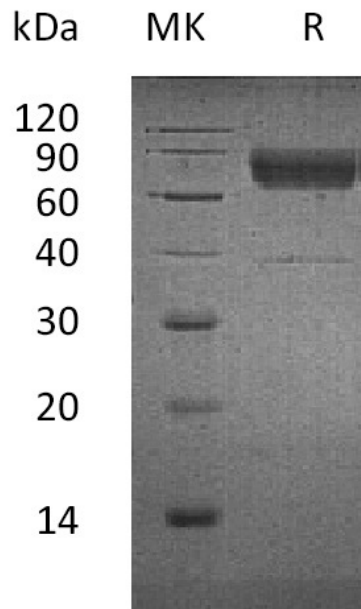


Summary

Name	CD300A/CMRF35-like molecule 8/CMRF35H/IGSF12
Purity	Greater than 95% as determined by reducing SDS-PAGE
Endotoxin level	<1 EU/μg as determined by LAL test.
Construction	Recombinant Human Leukocyte Mono-Ig-like Receptor 1 is produced by our Mammalian expression system and the target gene encoding Leu18-Gln178 is expressed with a human IgG1 Fc, 6His tag at the C-terminus.
Accession #	Q9UGN4
Host	Human Cells
Species	Human
Predicted Molecular Mass	45.4 KDa
Formulation	Lyophilized from a 0.2 μm filtered solution of 20mM Tris-HCl, 150mM NaCl, 5% Trehalose, pH 8.0.
Shipping	The product is shipped at ambient temperature. Upon receipt, store it immediately at the temperature listed below.
Stability&Storage	Lyophilized protein should be stored at ≤ -20°C, stable for one year after receipt. Reconstituted protein solution can be stored at 2-8°C for 2-7 days. Aliquots of reconstituted samples are stable at ≤ -20°C for 3 months.
Reconstitution	Always centrifuge tubes before opening. Do not mix by vortex or pipetting. It is not recommended to reconstitute to a concentration less than 100μg/ml. Dissolve the lyophilized protein in distilled water. Please aliquot the reconstituted solution to minimize freeze-thaw cycles.

SDS-PAGE image

Product Name: Recombinant Human CD300a (C-Fc-6His)
Catalog #: PHH0324



Alternative Names

CMRF35-like molecule 8; CD300 antigen-like family member A; CMRF-35-H9; CMRF35-H; IRC1/IRC2; Immunoglobulin superfamily member 12; Inhibitory receptor protein 60; NK inhibitory receptor

Background

CD300A is a single-pass type I membrane protein which belongs to the CD300 family. It contains 1 Ig-like V-type (immunoglobulin-like) domain. The CD300 family of myeloid immunoglobulin receptors includes activating (CD300b, CD300e) and inhibitory members (CD300a, CD300f), as well as molecules presenting a negative charge within their transmembrane domain (CD300c, CD300d). It is expressed not only by natural killer (NK) cells but also by T-cell subsets, B-cells, dendritic cells, mast cells, granulocytes and monocytes. CD300A is an inhibitory receptor which may contribute to the down-regulation of cytolytic activity in natural killer (NK) cells, and to the down-regulation of mast cell degranulation. CD300c is a functional immune receptor able to deliver activating signals upon ligation in RBL-2H3 mast cells.

Note

For Research Use Only , Not for Diagnostic Use.