

Product Name: Recombinant Human CD2 (C-6His)
Catalog #: PHH0306

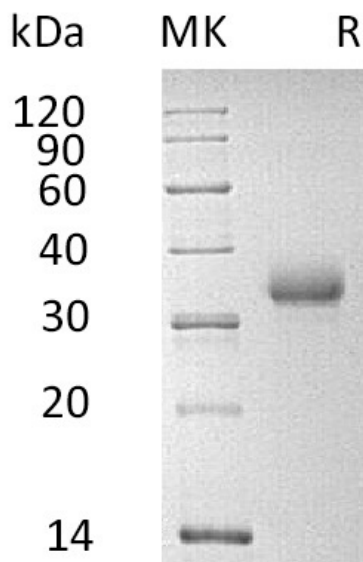


Summary

Name	CD2/LFA-3 receptor
Purity	Greater than 95% as determined by reducing SDS-PAGE
Endotoxin level	<1 EU/μg as determined by LAL test.
Construction	Recombinant Human T-cell Surface Antigen CD2 is produced by our Mammalian expression system and the target gene encoding Lys25-Asp209 is expressed with a 6His tag at the C-terminus.
Accession #	P06729
Host	Human Cells
Species	Human
Predicted Molecular Mass	22.29 KDa
Formulation	Lyophilized from a 0.2 μm filtered solution of 20mM PB, 150mM NaCl, pH 7.4.
Shipping	The product is shipped at ambient temperature. Upon receipt, store it immediately at the temperature listed below.
Stability&Storage	Lyophilized protein should be stored at ≤ -20°C, stable for one year after receipt. Reconstituted protein solution can be stored at 2-8°C for 2-7 days. Aliquots of reconstituted samples are stable at ≤ -20°C for 3 months.
Reconstitution	Always centrifuge tubes before opening. Do not mix by vortex or pipetting. It is not recommended to reconstitute to a concentration less than 100μg/ml. Dissolve the lyophilized protein in distilled water. Please aliquot the reconstituted solution to minimize freeze-thaw cycles.

SDS-PAGE image

Product Name: Recombinant Human CD2 (C-6His)
Catalog #: PHH0306



Alternative Names

T-cell surface antigen CD2; Erythrocyte receptor; LFA-2; LFA-3 receptor; Rosette receptor; T-cell surface antigen T11/Leu-5

Background

T-cell surface antigen CD2 is also known as Erythrocyte receptor, LFA-2, LFA-3 receptor, Rosette receptor, T-cell surface antigen T11/Leu-5. It is a protein that in humans is encoded by the CD2 gene. It is a single-pass type I membrane protein. contains 1 Ig-like C2-type domain and 1 Ig-like V-type domain. T-cell surface antigen CD2 interacts with lymphocyte function-associated antigen (LFA-3) and CD48/BCM1 to mediate adhesion between T-cells and other cell types. It is implicated in the triggering of T-cells, the cytoplasmic domain is implicated in the signaling function.

Note

For Research Use Only , Not for Diagnostic Use.