

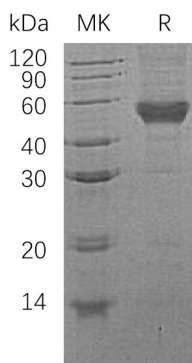
Product Name: Recombinant Human CD14 (C-6His)
Catalog #: PHH0291



Summary

Name	CD14
Purity	Greater than 95% as determined by reducing SDS-PAGE
Endotoxin level	<1 EU/μg as determined by LAL test.
Construction	Recombinant Human CD14 is produced by our Mammalian expression system and the target gene encoding Thr20-Cys352 is expressed with a 6His tag at the C-terminus.
Accession #	P08571
Host	Human Cells
Species	Human
Predicted Molecular Mass	36.81 KDa
Formulation	Lyophilized from a 0.2 μm filtered solution of 20mM PB, 150mM NaCl, pH 7.4.
Shipping	The product is shipped at ambient temperature. Upon receipt, store it immediately at the temperature listed below.
Stability&Storage	Store at ≤-70°C, stable for 6 months after receipt. Store at ≤-70°C, stable for 3 months under sterile conditions after opening. Please minimize freeze-thaw cycles.
Reconstitution	Always centrifuge tubes before opening. Do not mix by vortex or pipetting. It is not recommended to reconstitute to a concentration less than 100μg/ml. Dissolve the lyophilized protein in distilled water. Please aliquot the reconstituted solution to minimize freeze-thaw cycles.

SDS-PAGE image



Product Name: Recombinant Human CD14 (C-6His)
Catalog #: PHH0291



Background

Alternative Names	Monocyte Differentiation Antigen CD14; Myeloid Cell-Specific Leucine-Rich Glycoprotein; CD14
Background	CD14 is a cell surface glycoprotein that is preferentially expressed on monocytes/macrophages. CD14 is anchored to cells by linkage to glycosylphosphatidylinositol (GPI) and functions as a pattern recognition receptor that binds lipopolysaccharides (LPS) and a variety of ligands derived from different microbial sources. The binding of CD14 with LPS is catalyzed by LPS binding protein (LBP). Toll like receptors have also been implicated in the transduction of CD14-LPS signals. Soluble CD14 can be released from the cell surface by phosphatidylinositol-specific phospholipase C and has been detected in serum and body fluids. High concentrations of soluble CD14 have been shown to inhibit LPS mediated responses. However, soluble CD14 can also potentiate LPS response in cells that do not express cell surface CD14.

Note

For Research Use Only , Not for Diagnostic Use.