

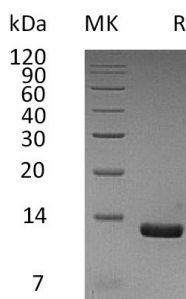
**Product Name: Recombinant Human CCL8 (C-6His)**  
**Catalog #: PHH0274**



## Summary

<b>Name</b>	CCL8/MCP-2
<b>Purity</b>	Greater than 95% as determined by reducing SDS-PAGE
<b>Endotoxin level</b>	<1 EU/μg as determined by LAL test.
<b>Construction</b>	Recombinant Human C-C Motif Chemokine 8 is produced by our Mammalian expression system and the target gene encoding Gln24-Pro99 is expressed with a 6His tag at the C-terminus.
<b>Accession #</b>	AAI26243.1
<b>Host</b>	Human Cells
<b>Species</b>	Human
<b>Predicted Molecular Mass</b>	9.95 KDa
<b>Formulation</b>	Lyophilized from a 0.2 μm filtered solution of 20mM PB, 150mM NaCl, 1mM EDTA, pH 7.4.
<b>Shipping</b>	The product is shipped at ambient temperature. Upon receipt, store it immediately at the temperature listed below.
<b>Stability&amp;Storage</b>	Lyophilized protein should be stored at ≤ -20°C, stable for one year after receipt. Reconstituted protein solution can be stored at 2-8°C for 2-7 days. Aliquots of reconstituted samples are stable at ≤ -20°C for 3 months.
<b>Reconstitution</b>	Always centrifuge tubes before opening. Do not mix by vortex or pipetting. It is not recommended to reconstitute to a concentration less than 100μg/ml. Dissolve the lyophilized protein in distilled water. Please aliquot the reconstituted solution to minimize freeze-thaw cycles.

## SDS-PAGE image



## Background

**Product Name: Recombinant Human CCL8 (C-6His)**  
**Catalog #: PHH0274**

---



**Alternative Names**

C-C Motif Chemokine 8; HC14; Monocyte Chemoattractant Protein 2; Monocyte Chemotactic Protein 2; MCP-2; Small-Inducible Cytokine A8; CCL8; MCP2; SCYA10; SCYA8

**Background**

Human Chemokine (C-C Motif) Ligand 8 (CCL8) is produced by human MG63 osteosarcoma cells. CCL8 shares 62% and 58% amino acid sequence identity with MCP-1 and MCP-3, respectively. All three MCP proteins are monocyte chemoattractants. CCL8 is chemotactic for and activates many different immune cells, including mast cells, eosinophils and basophils, which are implicated in allergic response, and monocytes, T cells, and NK cells that are involved in the inflammatory response. CCL8 elicits its effects by binding to several different cell surface receptors including CCR1, CCR2B and CCR5.

**Note**

For Research Use Only , Not for Diagnostic Use.