

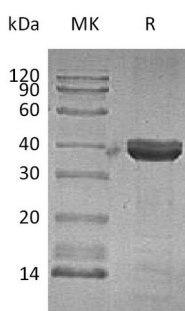
**Product Name: Recombinant Human CTSZ (C-6His)**  
**Catalog #: PHH0249**



## Summary

<b>Name</b>	Cathepsin Z/X/P
<b>Purity</b>	Greater than 95% as determined by reducing SDS-PAGE
<b>Endotoxin level</b>	<1 EU/μg as determined by LAL test.
<b>Construction</b>	Recombinant Human Cathepsin Z is produced by our Mammalian expression system and the target gene encoding Gly24-Val303 is expressed with a 6His tag at the C-terminus.
<b>Accession #</b>	Q9UBR2
<b>Host</b>	Human Cells
<b>Species</b>	Human
<b>Predicted Molecular Mass</b>	32.51 KDa
<b>Formulation</b>	Supplied as a 0.2 μm filtered solution of 4mM HCl.
<b>Shipping</b>	The product is shipped on dry ice/polar packs. Upon receipt, store it immediately at the temperature listed below.
<b>Stability&amp;Storage</b>	Store at ≤-70°C, stable for 6 months after receipt. Store at ≤-70°C, stable for 3 months under sterile conditions after opening. Please minimize freeze-thaw cycles.
<b>Reconstitution</b>	

## SDS-PAGE image



## Background

<b>Alternative Names</b>	Cathepsin Z; Cathepsin P; Cathepsin X; CTSZ
<b>Background</b>	Cathepsin Z is a lysosomal cysteine proteinase and belongs to the peptidase C1 family. Human Cathepsin Z contains a signal sequence, a propeptide and a

**Product Name: Recombinant Human CTSZ (C-6His)**  
**Catalog #: PHH0249**

---



mature chain. It exhibits both carboxy-monopeptidase and carboxy-dipeptidase activities. In contrast to cathepsin B, it does not act as an endopeptidase. Cathepsin Z is restricted to the cells of the immune system, predominantly monocytes, macrophages and dendritic cells. It is expressed ubiquitously in cancer cell lines and primary tumors. Like other members of this family, Cathepsin Z may be involved in tumorigenesis.

### **Note**

For Research Use Only , Not for Diagnostic Use.