

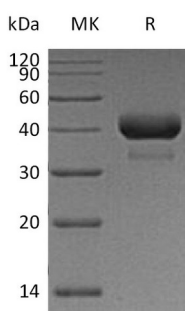
Product Name: Recombinant Human CTSB (C-6His)
Catalog #: PHH0240



Summary

Name	Cathepsin B/CTSB
Purity	Greater than 95% as determined by reducing SDS-PAGE
Endotoxin level	<1 EU/μg as determined by LAL test.
Construction	Recombinant Human Cathepsin B is produced by our Mammalian expression system and the target gene encoding Arg18-Ile339 is expressed with a 6His tag at the C-terminus.
Accession #	AAH10240.1
Host	Human Cells
Species	Human
Predicted Molecular Mass	36.9 KDa
Formulation	Supplied as a 0.2 μm filtered solution of PBS, 8% Sucrose, 0.05% Tween 80, pH7.4.
Shipping	The product is shipped on dry ice/polar packs. Upon receipt, store it immediately at the temperature listed below.
Stability&Storage	Store at ≤-70°C, stable for 6 months after receipt. Store at ≤-70°C, stable for 3 months under sterile conditions after opening. Please minimize freeze-thaw cycles.
Reconstitution	

SDS-PAGE image



Background

Alternative Names	Cathepsin B; APP Secretase; APPS; Cathepsin B1; CTSB; CPSB
Background	Cathepsin B is an enzymatic protein belonging to the peptidase (or protease) families. The protein encoded by this gene is a lysosomal cysteine protease

Product Name: Recombinant Human CTSB (C-6His)
Catalog #: PHH0240



composed of a dimer of disulfide-linked heavy and light chains, both produced from a single protein precursor. It is a member of the peptidase C1 family. At least five transcript variants encoding the same protein have been found for this gene. Cystatin-B / CSTB is an intracellular thiol proteinase inhibitor. Tightly binding reversible inhibitor of cathepsins L, H and B. Cystatin-B / CSTB is able to form a dimer stabilized by noncovalent forces, inhibiting papain and cathepsins L, h and b. Cystatin-B / CSTB is also thought to play a role in protecting against the proteases leaking from lysosomes.

Note

For Research Use Only , Not for Diagnostic Use.