

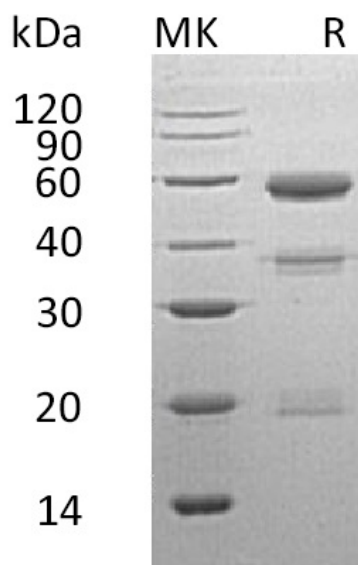
**Product Name: Recombinant Human CPE (C-6His)**  
**Catalog #: PHH0230**



## Summary

<b>Name</b>	Carboxypeptidase E/CPE
<b>Purity</b>	Greater than 95% as determined by reducing SDS-PAGE
<b>Endotoxin level</b>	<1 EU/μg as determined by LAL test.
<b>Construction</b>	Recombinant Human Carboxypeptidase E is produced by our Mammalian expression system and the target gene encoding Arg42-Ser453 is expressed with a 6His tag at the C-terminus.
<b>Accession #</b>	P16870
<b>Host</b>	Human Cells
<b>Species</b>	Human
<b>Predicted Molecular Mass</b>	47.2 KDa
<b>Formulation</b>	Supplied as a 0.2 μm filtered solution of 20mM PB, 500mM NaCl, 0.05% Tween80, 250mM Glycine, 2mM EDTA, 50mM L-Arg, pH6.5.
<b>Shipping</b>	The product is shipped on dry ice/polar packs. Upon receipt, store it immediately at the temperature listed below.
<b>Stability&amp;Storage</b>	Store at ≤-70°C, stable for 6 months after receipt. Store at ≤-70°C, stable for 3 months under sterile conditions after opening. Please minimize freeze-thaw cycles.
<b>Reconstitution</b>	

## SDS-PAGE image



**Product Name: Recombinant Human CPE (C-6His)**  
**Catalog #: PHH0230**

---



### **Alternative Names**

Carboxypeptidase E(CPE for short); Carboxypeptidase H; Enkephalin convertase; Prohormone-processing carboxypeptidase

### **Background**

The active form of CPE cleaves C-terminal amino acid residues of the peptide, and is thus involved in the biosynthesis of peptide hormones and neurotransmitters including insulin, enkephalin, etc. It is thought that membrane-associated CPE acts as a sorting receptor for targeting regulated secretory proteins which are mostly prohormones and neuropeptides in the trans-Golgi network of the pituitary and in secretory granules into the secretory pathway. Defects in this protein are implicated in type II diabetes due to impaired glucose clearance and insulin resistance.

### **Note**

For Research Use Only , Not for Diagnostic Use.