

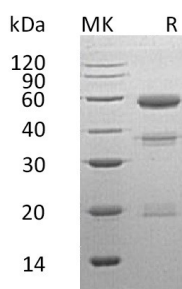
Product Name: Recombinant Human CPE (C-6His)
Catalog #: PHH0230



Summary

Name	Carboxypeptidase E/CPE
Purity	Greater than 95% as determined by reducing SDS-PAGE
Endotoxin level	<1 EU/μg as determined by LAL test.
Construction	Recombinant Human Carboxypeptidase E is produced by our Mammalian expression system and the target gene encoding Arg42-Ser453 is expressed with a 6His tag at the C-terminus.
Accession #	P16870
Host	Human Cells
Species	Human
Predicted Molecular Mass	47.2 KDa
Formulation	Supplied as a 0.2 μm filtered solution of 20mM PB, 500mM NaCl, 0.05% Tween80, 250mM Glycine, 2mM EDTA, 50mM L-Arg, pH6.5.
Shipping	The product is shipped on dry ice/polar packs. Upon receipt, store it immediately at the temperature listed below.
Stability&Storage	Store at ≤-70°C, stable for 6 months after receipt. Store at ≤-70°C, stable for 3 months under sterile conditions after opening. Please minimize freeze-thaw cycles.
Reconstitution	

SDS-PAGE image



Background

Alternative Names	Carboxypeptidase E(CPE for short); Carboxypeptidase H; Enkephalin convertase; Prohormone-processing carboxypeptidase
Background	The active form of CPE cleaves C-terminal amino acid residues of the peptide, and is thus involved in the biosynthesis of peptide hormones and neurotransmitters including insulin, enkephalin, etc. It is thought that membrane-associated CPE acts

Product Name: Recombinant Human CPE (C-6His)
Catalog #: PHH0230



as a sorting receptor for targeting regulated secretory proteins which are mostly prohormones and neuropeptides in the trans-Golgi network of the pituitary and in secretory granules into the secretory pathway. Defects in this protein are implicated in type II diabetes due to impaired glucose clearance and insulin resistance.

Note

For Research Use Only , Not for Diagnostic Use.