

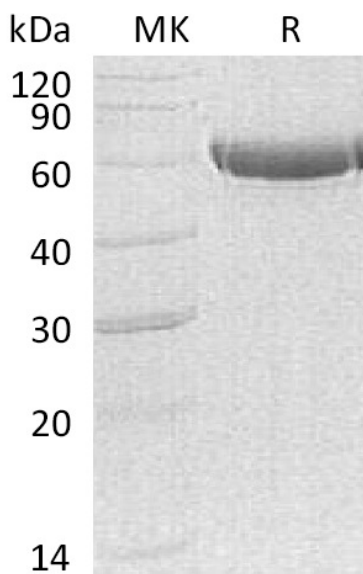
Product Name: Recombinant Human CPB2 (C-6His)
Catalog #: PHH0229



Summary

Name	Carboxypeptidase B2/CPB2
Purity	Greater than 95% as determined by reducing SDS-PAGE
Endotoxin level	<1 EU/μg as determined by LAL test.
Construction	Recombinant Human Carboxypeptidase B2 is produced by our Mammalian expression system and the target gene encoding Phe23-Val423 is expressed with a 6His tag at the C-terminus.
Accession #	NP_001863.3
Host	Human Cells
Species	Human
Predicted Molecular Mass	47 KDa
Formulation	Supplied as a 0.2 μm filtered solution of 20mM Tris-HCl, 150mM NaCl, 1mM ZnCl ₂ , 10% Glycerol, pH8.0.
Shipping	The product is shipped on dry ice/polar packs. Upon receipt, store it immediately at the temperature listed below.
Stability&Storage	Store at ≤-70°C, stable for 6 months after receipt. Store at ≤-70°C, stable for 3 months under sterile conditions after opening. Please minimize freeze-thaw cycles.
Reconstitution	

SDS-PAGE image



Product Name: Recombinant Human CPB2 (C-6His)
Catalog #: PHH0229



Alternative Names

Carboxypeptidase B2; Carboxypeptidase U; CPU; Plasma Carboxypeptidase B; pCPB; Thrombin-Activable Fibrinolysis Inhibitor; TAFI; CPB2

Background

Carboxypeptidase B2 (CPB2) is a secreted enzyme that belongs to the peptidase M14 family. CPB2 is synthesized by the liver and circulates in the plasma as a plasminogen-bound zymogen by the liver and circulates in the plasma as a plasminogen-bound zymogen. CPB2 cleaves C-terminal arginine or lysine residues from biologically active peptides, such as kinins or anaphylatoxins, in the circulation regulating their activities. CPB2 also down-regulates fibrinolysis by removing C-terminal lysine residues from fibrin that has already been partially degraded by plasmin. CPB2 exhibits carboxypeptidase activity when it is activated by proteolysis at residue Arg92 of the thrombin/thrombomodulin complex. Activated CPB2 reduces fibrinolysis by removing the fibrin C-terminal residues that are important for the binding and activation of plasminogen.

Note

For Research Use Only , Not for Diagnostic Use.