

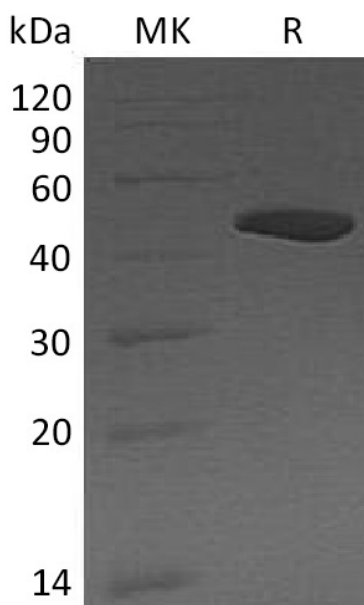
**Product Name: Recombinant Human CPB1 (C-6His)**  
**Catalog #: PHH0228**



## Summary

<b>Name</b>	Carboxypeptidase B1/CPB1
<b>Purity</b>	Greater than 95% as determined by reducing SDS-PAGE
<b>Endotoxin level</b>	<1 EU/μg as determined by LAL test.
<b>Construction</b>	Recombinant Human Carboxypeptidase B is produced by our Mammalian expression system and the target gene encoding His16-Tyr417 is expressed with a 6His tag at the C-terminus.
<b>Accession #</b>	P15086
<b>Host</b>	Human Cells
<b>Species</b>	Human
<b>Predicted Molecular Mass</b>	46.94 KDa
<b>Formulation</b>	Supplied as a 0.2 μm filtered solution of 20mM MES, 150mM NaCl, pH 5.5.
<b>Shipping</b>	The product is shipped on dry ice/polar packs. Upon receipt, store it immediately at the temperature listed below.
<b>Stability&amp;Storage</b>	Store at ≤-70°C, stable for 6 months after receipt. Store at ≤-70°C, stable for 3 months under sterile conditions after opening. Please minimize freeze-thaw cycles.
<b>Reconstitution</b>	

## SDS-PAGE image



**Product Name: Recombinant Human CPB1 (C-6His)**  
**Catalog #: PHH0228**

---



### **Alternative Names**

Carboxypeptidase B; Pancreas-Specific Protein; PASP; CPB1; CPB; PCPB

### **Background**

Carboxypeptidase B1 is an exopeptidase which specifically cleaves the C-terminal Arg and Lys residues with a preference for Arg. Expressed mainly in pancreas, CPB1 is a useful serum marker for acute pancreatitis and pancreatic graft rejection. Human CPB1 consists of a signal peptide, a pro region, and a mature chain. The purified rhCPB1 corresponds to the pro form, which can be activated by trypsin, the only pancreatic protease capable of generating active enzyme from the zymogen in vitro.

### **Note**

For Research Use Only , Not for Diagnostic Use.