

Product Name: Recombinant Human PRADC1 (C-6His)
Catalog #: PHH0187

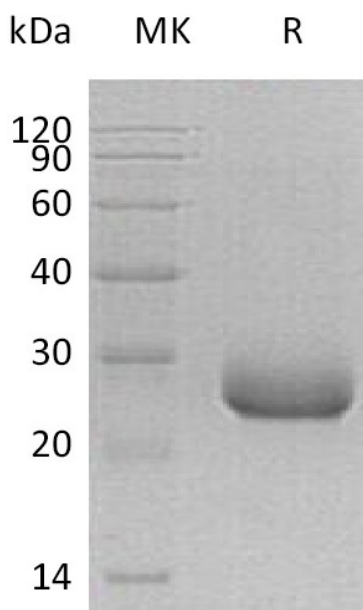


Summary

Name	C2orf7/PRADC1
Purity	Greater than 95% as determined by reducing SDS-PAGE
Endotoxin level	<1 EU/μg as determined by LAL test.
Construction	Recombinant Human Protease-associated Domain-containing Protein 1 is produced by our Mammalian expression system and the target gene encoding His22-Trp188 is expressed with a 6His tag at the C-terminus.
Accession #	Q9BSG0
Host	Human Cells
Species	Human
Predicted Molecular Mass	20 KDa
Formulation	Lyophilized from a 0.2 μm filtered solution of 20mM PB, 150mM NaCl, pH 7.4.
Shipping	The product is shipped at ambient temperature. Upon receipt, store it immediately at the temperature listed below.
Stability&Storage	Store at ≤-70°C, stable for 6 months after receipt. Store at ≤-70°C, stable for 3 months under sterile conditions after opening. Please minimize freeze-thaw cycles.
Reconstitution	Always centrifuge tubes before opening. Do not mix by vortex or pipetting. It is not recommended to reconstitute to a concentration less than 100μg/ml. Dissolve the lyophilized protein in distilled water. Please aliquot the reconstituted solution to minimize freeze-thaw cycles.

SDS-PAGE image

Product Name: Recombinant Human PRADC1 (C-6His)
Catalog #: PHH0187



Alternative Names

Protease-associated domain-containing protein 1;Protease-associated domain-containing protein of 21 kDa;Hpap21;C2orf7; PAP21;UNQ833/PRO1760

Background

PRADC1, also known as C2orf7 or PAP21, is short for Protease-associated domain-containing protein 1. It is a 188 aa. with a 21 aa. signal, and the 171 located Asn can be glycosylated. PRADC1 has two mutagenesis which are N121Q and N171Q. This protein is secreted and highly expressed in skeletal muscle, heart and liver. It is expressed at intermediate level in kidney.

Note

For Research Use Only , Not for Diagnostic Use.