

Product Name: Recombinant Human C1q R1 (C-6His)
Catalog #: PHH0184

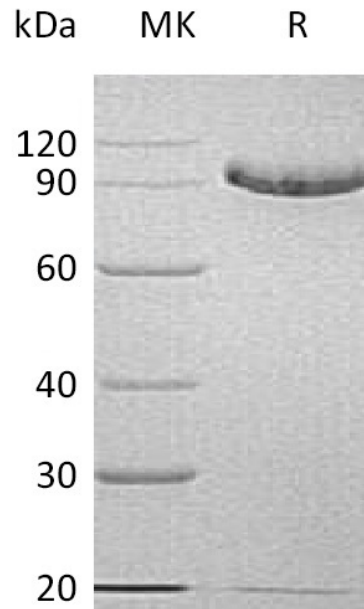


Summary

Name	C1q R1/CD93
Purity	Greater than 95% as determined by reducing SDS-PAGE
Endotoxin level	<1 EU/μg as determined by LAL test.
Construction	Recombinant Human Complement Component C1q Receptor is produced by our Mammalian expression system and the target gene encoding Ala24-Lys580 is expressed with a 6His tag at the C-terminus.
Accession #	Q9NPY3
Host	Human Cells
Species	Human
Predicted Molecular Mass	59.15 KDa
Formulation	Lyophilized from a 0.2 μm filtered solution of PBS, pH 7.4.
Shipping	The product is shipped at ambient temperature. Upon receipt, store it immediately at the temperature listed below.
Stability&Storage	Lyophilized protein should be stored at ≤ -20°C, stable for one year after receipt. Reconstituted protein solution can be stored at 2-8°C for 2-7 days. Aliquots of reconstituted samples are stable at ≤ -20°C for 3 months.
Reconstitution	Always centrifuge tubes before opening. Do not mix by vortex or pipetting. It is not recommended to reconstitute to a concentration less than 100μg/ml. Dissolve the lyophilized protein in distilled water. Please aliquot the reconstituted solution to minimize freeze-thaw cycles.

SDS-PAGE image

Product Name: Recombinant Human C1q R1 (C-6His)
Catalog #: PHH0184



Alternative Names

Complement Component C1q Receptor; C1q/MBL/SPA Receptor; C1qR; C1qR(p); C1qRp; CDw93; Complement Component 1 q Subcomponent Receptor 1; Matrix-Remodeling-Associated Protein 4CD93; C1QR1; MXRA4

Background

C1q R1 is also known as CD93, collectin receptor, and AA4 antigen, belongs to the Group XIV C-Type lectin family which play a role not only in cell-cell adhesion processes but also in host defence. All of them contain a C-type lectin domain, a series of epidermal growth factor like domains (EGF), a highly glycosylated mucin-like domain, a unique transmembrane domain and a short cytoplasmic tail. C1q R1 has also been identified as a hematopoietic stem cell marker.

Note

For Research Use Only , Not for Diagnostic Use.