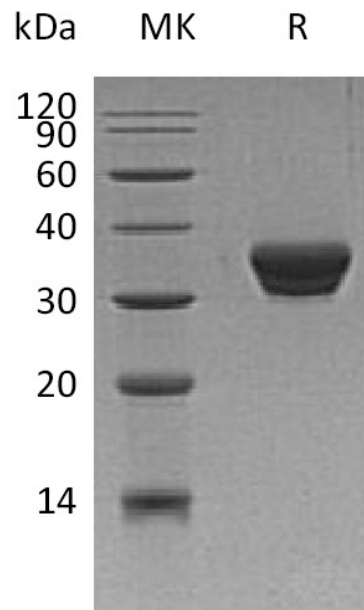


## Summary

|                                 |                                                                                                                                                                                                                                                                                                                                                                                                                                                                                                                                                                               |
|---------------------------------|-------------------------------------------------------------------------------------------------------------------------------------------------------------------------------------------------------------------------------------------------------------------------------------------------------------------------------------------------------------------------------------------------------------------------------------------------------------------------------------------------------------------------------------------------------------------------------|
| <b>Name</b>                     | ASAM/CXADR-like membrane protein/CLMP                                                                                                                                                                                                                                                                                                                                                                                                                                                                                                                                         |
| <b>Purity</b>                   | Greater than 95% as determined by reducing SDS-PAGE                                                                                                                                                                                                                                                                                                                                                                                                                                                                                                                           |
| <b>Endotoxin level</b>          | <1 EU/μg as determined by LAL test.                                                                                                                                                                                                                                                                                                                                                                                                                                                                                                                                           |
| <b>Construction</b>             | Recombinant Human Adipocyte Adhesion Molecule is produced by our Mammalian expression system and the target gene encoding Thr19-Met233 is expressed with a 6His tag at the C-terminus.                                                                                                                                                                                                                                                                                                                                                                                        |
| <b>Accession #</b>              | Q9H6B4                                                                                                                                                                                                                                                                                                                                                                                                                                                                                                                                                                        |
| <b>Host</b>                     | Human Cells                                                                                                                                                                                                                                                                                                                                                                                                                                                                                                                                                                   |
| <b>Species</b>                  | Human                                                                                                                                                                                                                                                                                                                                                                                                                                                                                                                                                                         |
| <b>Predicted Molecular Mass</b> | 25.38 KDa                                                                                                                                                                                                                                                                                                                                                                                                                                                                                                                                                                     |
| <b>Formulation</b>              | Lyophilized from a 0.2 μm filtered solution of 20mM PB, 150mM NaCl, pH 7.2.                                                                                                                                                                                                                                                                                                                                                                                                                                                                                                   |
| <b>Shipping</b>                 | The product is shipped at ambient temperature. Upon receipt, store it immediately at the temperature listed below.                                                                                                                                                                                                                                                                                                                                                                                                                                                            |
| <b>Stability&amp;Storage</b>    | Lyophilized protein should be stored at ≤ -20°C, stable for one year after receipt. Reconstituted protein solution can be stored at 2-8°C for 2-7 days. Aliquots of reconstituted samples are stable at ≤ -20°C for 3 months.                                                                                                                                                                                                                                                                                                                                                 |
| <b>Reconstitution</b>           | Always centrifuge tubes before opening. Do not mix by vortex or pipetting. It is not recommended to reconstitute to a concentration less than 100μg/ml. Dissolve the lyophilized protein in distilled water. Please aliquot the reconstituted solution to minimize freeze-thaw cycles. Always centrifuge tubes before opening. Do not mix by vortex or pipetting. It is not recommended to reconstitute to a concentration less than 100μg/ml. Dissolve the lyophilized protein in distilled water. Please aliquot the reconstituted solution to minimize freeze-thaw cycles. |

## SDS-PAGE image

**Product Name: Recombinant Human ASAM (C-6His)**  
**Catalog #: PHH0104**



### **Alternative Names**

CXADR-Like Membrane Protein; Adipocyte Adhesion Molecule; Coxsackie- and Adenovirus Receptor-Like Membrane Protein; CAR-Like Membrane Protein; CLMP; ACAM; ASAM

### **Background**

Adipocyte Adhesion Molecule (ASAM) is a type I transmembrane protein and member of the CTX family within the immunoglobulin superfamily. ASAM may be involved in the cell-cell adhesion, play an important role in adipocyte differentiation and development of obesity. ASAM can be expressed in the skeletal, heart, colon, spleen, muscle, lung and kidney with high level, and in the peripheral blood leukocytes and liver with low level. The extracellular region of ASAM consists two potential N-linked glycosylation sites, and two immunoglobulin domains, one V-type and one C2-type.

### **Note**

For Research Use Only , Not for Diagnostic Use.