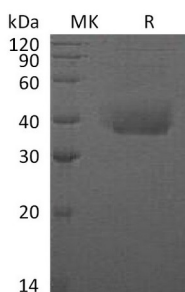


## Summary

<b>Name</b>	ANTXR1/TEM8/Anthrax toxin receptor 1/ATR
<b>Purity</b>	Greater than 95% as determined by reducing SDS-PAGE
<b>Endotoxin level</b>	<1 EU/μg as determined by LAL test.
<b>Construction</b>	Recombinant Human Anthrax Toxin Receptor 1 is produced by our Mammalian expression system and the target gene encoding Glu33-Lys321 is expressed with a 6His tag at the C-terminus.
<b>Accession #</b>	Q9H6X2-4
<b>Host</b>	Human Cells
<b>Species</b>	Human
<b>Predicted Molecular Mass</b>	33.56 KDa
<b>Formulation</b>	Lyophilized from a 0.2 μm filtered solution of 20mM PB, 150mM NaCl, pH 7.4.
<b>Shipping</b>	The product is shipped at ambient temperature. Upon receipt, store it immediately at the temperature listed below.
<b>Stability&amp;Storage</b>	Lyophilized protein should be stored at ≤ -20°C, stable for one year after receipt. Reconstituted protein solution can be stored at 2-8°C for 2-7 days. Aliquots of reconstituted samples are stable at ≤ -20°C for 3 months.
<b>Reconstitution</b>	Always centrifuge tubes before opening. Do not mix by vortex or pipetting. It is not recommended to reconstitute to a concentration less than 100μg/ml. Dissolve the lyophilized protein in distilled water. Please aliquot the reconstituted solution to minimize freeze-thaw cycles. Always centrifuge tubes before opening. Do not mix by vortex or pipetting. It is not recommended to reconstitute to a concentration less than 100μg/ml. Dissolve the lyophilized protein in distilled water. Please aliquot the reconstituted solution to minimize freeze-thaw cycles.

## SDS-PAGE image



## Background

**Product Name: Recombinant Human ANTXR1 (C-6His)**  
**Catalog #: PHH0077**



---

**Alternative Names**

Anthrax Toxin Receptor 1; Tumor Endothelial Marker 8; ANTXR1; ATR; TEM8

**Background**

Anthrax Toxin Receptor 1 (ANTXR1) is a single-pass type I membrane protein that belongs to the ATR family. ANTXR1 contains one VWFA domain and binds PA through the VWA domain. ANTXR1 is highly expressed in tumor endothelial cells. ANTXR1 plays a role in cell attachment and migration. ANTXR1 interacts with extracellular matrix proteins and the actin cytoskeleton, it mediates adhesion of cells to type 1 collagen and gelatin, reorganization of the actin cytoskeleton and promotes cell spreading. It is also involved in the angiogenic response of cultured umbilical vein endothelial cells, up-regulated in cultured angiogenic umbilical vein endothelial cells. Defects in ANTXR1 are associated with susceptibility to hemangioma capillary infantile (HCI).

**Note**

For Research Use Only , Not for Diagnostic Use.