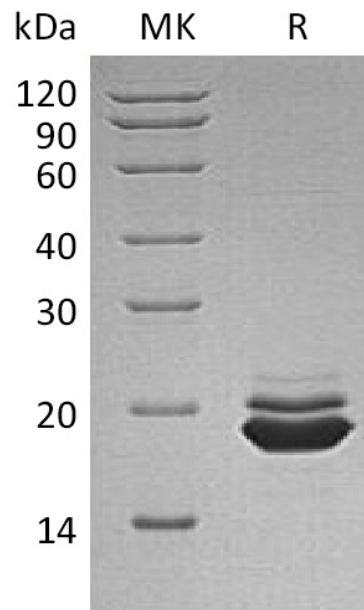


Summary

Name	Amyloid-like Protein 1/APLP-1
Purity	Greater than 95% as determined by reducing SDS-PAGE
Endotoxin level	<1 EU/μg as determined by LAL test.
Construction	Recombinant Human Amyloid-like Protein 1 is produced by our Mammalian expression system and the target gene encoding Gly42-Pro212 is expressed with a 6His tag at the C-terminus.
Accession #	P51693
Host	Human Cells
Species	Human
Predicted Molecular Mass	19.8 KDa
Formulation	Lyophilized from a 0.2 μm filtered solution of PBS, 1mM EDTA, pH 7.4.
Shipping	The product is shipped at ambient temperature. Upon receipt, store it immediately at the temperature listed below.
Stability&Storage	Lyophilized protein should be stored at ≤ -20°C, stable for one year after receipt. Reconstituted protein solution can be stored at 2-8°C for 2-7 days. Aliquots of reconstituted samples are stable at ≤ -20°C for 3 months.
Reconstitution	Always centrifuge tubes before opening. Do not mix by vortex or pipetting. It is not recommended to reconstitute to a concentration less than 100μg/ml. Dissolve the lyophilized protein in distilled water. Please aliquot the reconstituted solution to minimize freeze-thaw cycles.

SDS-PAGE image

Product Name: Recombinant Human APLP-1 (C-6His)
Catalog #: PHH0060



Alternative Names

Amyloid-like protein 1; APLP; APLP-1; C30; APLP1

Background

Amyloid-like protein 1 (APLP-1) is a member of the highly conserved amyloid precursor protein gene family. APLP1 is a membrane-associated glycoprotein that is cleaved by secretases in a manner similar to amyloid beta A4 precursor protein cleavage. APLP1, together with APLP2, are important modulators of glucose. APLP1 may also play a role in synaptic maturation during cortical development, and is genetically linked to Alzheimersdisease.

Note

For Research Use Only , Not for Diagnostic Use.