

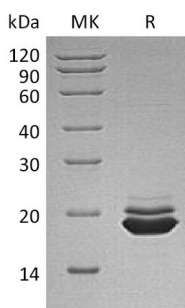
**Product Name: Recombinant Human APLP-1 (C-6His)**  
**Catalog #: PHH0060**



## Summary

<b>Name</b>	Amyloid-like Protein 1/APLP-1
<b>Purity</b>	Greater than 95% as determined by reducing SDS-PAGE
<b>Endotoxin level</b>	<1 EU/μg as determined by LAL test.
<b>Construction</b>	Recombinant Human Amyloid-like Protein 1 is produced by our Mammalian expression system and the target gene encoding Gly42-Pro212 is expressed with a 6His tag at the C-terminus.
<b>Accession #</b>	P51693
<b>Host</b>	Human Cells
<b>Species</b>	Human
<b>Predicted Molecular Mass</b>	19.8 KDa
<b>Formulation</b>	Lyophilized from a 0.2 μm filtered solution of PBS, 1mM EDTA, pH 7.4.
<b>Shipping</b>	The product is shipped at ambient temperature. Upon receipt, store it immediately at the temperature listed below.
<b>Stability&amp;Storage</b>	Lyophilized protein should be stored at ≤ -20°C, stable for one year after receipt. Reconstituted protein solution can be stored at 2-8°C for 2-7 days. Aliquots of reconstituted samples are stable at ≤ -20°C for 3 months.
<b>Reconstitution</b>	Always centrifuge tubes before opening. Do not mix by vortex or pipetting. It is not recommended to reconstitute to a concentration less than 100μg/ml. Dissolve the lyophilized protein in distilled water. Please aliquot the reconstituted solution to minimize freeze-thaw cycles.

## SDS-PAGE image



## Background

**Product Name: Recombinant Human APLP-1 (C-6His)**  
**Catalog #: PHH0060**

---



**Alternative Names**

Amyloid-like protein 1; APLP; APLP-1; C30; APLP1

**Background**

Amyloid-like protein 1 (APLP-1) is a member of the highly conserved amyloid precursor protein gene family. APLP1 is a membrane-associated glycoprotein that is cleaved by secretases in a manner similar to amyloid beta A4 precursor protein cleavage. APLP1, together with APLP2, are important modulators of glucose. APLP1 may also play a role in synaptic maturation during cortical development, and is genetically linked to Alzheimersdisease.

**Note**

For Research Use Only , Not for Diagnostic Use.