

Product Name: Recombinant Human AMY2B (C-6His)
Catalog #: PHH0059

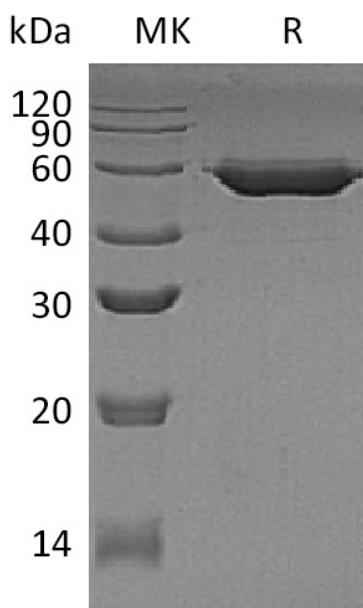


Summary

Name	AMY2B/Alpha-amylase 2B
Purity	Greater than 95% as determined by reducing SDS-PAGE
Endotoxin level	<1 EU/μg as determined by LAL test.
Construction	Recombinant Human Alpha-amylase 2B is produced by our Mammalian expression system and the target gene encoding Gln16-Leu511 is expressed with a 6His tag at the C-terminus.
Accession #	P19961
Host	Human Cells
Species	Human
Predicted Molecular Mass	56.9 KDa
Formulation	Supplied as a 0.2 μm filtered solution of 20mM Tris-HCl, pH 8.0.
Shipping	The product is shipped on dry ice/polar packs. Upon receipt, store it immediately at the temperature listed below.
Stability&Storage	Store at ≤-70°C, stable for 6 months after receipt. Store at ≤-70°C, stable for 3 months under sterile conditions after opening. Please minimize freeze-thaw cycles.
Reconstitution	

SDS-PAGE image

Product Name: Recombinant Human AMY2B (C-6His)
Catalog #: PHH0059



Alternative Names

Alpha-amylase 2B; 1,4-alpha-D-glucan glucanohydrolase 2B; Carcinoid alpha-amylase; HXA; AMY2; AMY3

Background

Alpha-amylase 2B is an enzyme that in humans is encoded by the AMY2B gene. Alpha-amylase 2B is a secreted protein and belongs to the glycosyl hydrolase 13 family. It hydrolyzes 1,4-alpha-glucoside bonds in oligosaccharides and polysaccharides, and thus catalyze the first step in digestion of dietary starch and glycogen. The human genome has a cluster of several amylase genes that are expressed at high levels in either salivary gland or pancreas. This gene encodes an amylase isoenzyme produced by the pancreas. Diseases associated with AMY2B include pancreatitis, and thyroiditis, and among its related super-pathways are Metabolic pathways and MPS IIIC - Sanfilippo syndrome C.

Note

For Research Use Only , Not for Diagnostic Use.