

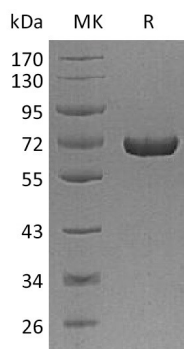
**Product Name: Recombinant Human AFP (C-6His)**  
**Catalog #: PHH0048**



## Summary

<b>Name</b>	AFP/Alpha-Fetoprotein
<b>Purity</b>	Greater than 95% as determined by reducing SDS-PAGE
<b>Endotoxin level</b>	<1 EU/μg as determined by LAL test.
<b>Construction</b>	Recombinant Human Alpha-fetoprotein is produced by our Mammalian expression system and the target gene encoding Arg19-Val609 is expressed with a 6His tag at the C-terminus.
<b>Accession #</b>	P02771
<b>Host</b>	Human Cells
<b>Species</b>	Human
<b>Predicted Molecular Mass</b>	67.3 KDa
<b>Formulation</b>	Lyophilized from a 0.2 μm filtered solution of PBS, pH 7.4.
<b>Shipping</b>	The product is shipped at ambient temperature. Upon receipt, store it immediately at the temperature listed below.
<b>Stability&amp;Storage</b>	Lyophilized protein should be stored at ≤ -20°C, stable for one year after receipt. Reconstituted protein solution can be stored at 2-8°C for 2-7 days. Aliquots of reconstituted samples are stable at ≤ -20°C for 3 months.
<b>Reconstitution</b>	Always centrifuge tubes before opening. Do not mix by vortex or pipetting. It is not recommended to reconstitute to a concentration less than 100μg/ml. Dissolve the lyophilized protein in distilled water. Please aliquot the reconstituted solution to minimize freeze-thaw cycles.

## SDS-PAGE image



**Product Name: Recombinant Human AFP (C-6His)**  
**Catalog #: PHH0048**



---

## Background

**Alternative Names** Alpha-fetoprotein; Alpha-1-fetoprotein; Alpha-fetoglobulin; AFP; HPAFP

**Background** Alpha-fetoprotein (AFP) is classified as a member of the albuminoid gene superfamily consisting of albumin, AFP, vitaminD (Gc) protein, and alpha-albumin. AFP is a glycoprotein of 591 amino acids and a carbohydrate moiety. AFP is a major plasma protein produced by the yolk sac and the liver during fetal development. It is thought to be the fetal form of serum albumin. AFP binds to copper, nickel, fatty acids and bilirubin and is found in monomeric, dimeric and trimeric forms. AFP is one of the several embryo-specific proteins and is adominant serum protein as early in human embryonic life as one month, when albumin and transferrin are present in relatively small amounts. It is first synthesized in the human by the yolk sac and liver (1-2 months) and subsequently predominantly in the liver. A small amount of AFP is produced by the GI tract of the human conceptus. It has been proved that AFP may reappear in the serum in elevated amounts in adult life in association with normal restorative processes and with malignnt growth. Alpha-fetoprotein (AFP) is a specific marker for hepatocellular carcinoma (HCC), teratoblastomas, and neural tube defect (NTD).

## Note

For Research Use Only , Not for Diagnostic Use.