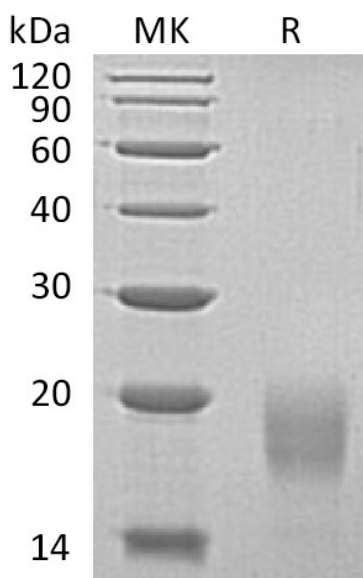


Summary

Name	ALK-4/Activin RIB/Activin Receptor IB/ACVR1B
Purity	Greater than 95% as determined by reducing SDS-PAGE
Endotoxin level	<1 EU/μg as determined by LAL test.
Construction	Recombinant Human Activin Receptor Type-1B is produced by our Mammalian expression system and the target gene encoding Ser24-Glu126 is expressed with a 6His tag at the C-terminus.
Accession #	P36896
Host	Human Cells
Species	Human
Predicted Molecular Mass	12.46 KDa
Formulation	Lyophilized from a 0.2 μm filtered solution of 20mM PB, 150mM NaCl, pH 7.4.
Shipping	The product is shipped at ambient temperature. Upon receipt, store it immediately at the temperature listed below.
Stability&Storage	Lyophilized protein should be stored at ≤ -20°C, stable for one year after receipt. Reconstituted protein solution can be stored at 2-8°C for 2-7 days. Aliquots of reconstituted samples are stable at ≤ -20°C for 3 months.
Reconstitution	Always centrifuge tubes before opening. Do not mix by vortex or pipetting. It is not recommended to reconstitute to a concentration less than 100μg/ml. Dissolve the lyophilized protein in distilled water. Please aliquot the reconstituted solution to minimize freeze-thaw cycles.

SDS-PAGE image

Product Name: Recombinant Human ACVR1B (C-6His)
Catalog #: PHH0017



Alternative Names

Activin Receptor Type-1B; Activin Receptor Type IB; ACTR-1B; Activin Receptor-Like Kinase 4; ALK-4; Serine/Threonine-Protein Kinase Receptor R2; SKR2; ACVR1B; ACVRLK4; ALK4

Background

Activin Receptor Type-1B (ACVR1B) is a single-pass type I membrane protein that belongs to the protein kinase superfamily. ACVR1B contains one GS domain and one protein kinase domain and is expressed in many tissues, most strongly in kidney, pancreas, brain, lung, and liver. ACVR1B acts as a transducer of activin or activin like ligands signals. Activin binds to either ACVR2A or ACVR2B and then forms a complex with ACVR1B, ACVR2A or ACVR2B activating ACVR1B through phosphorylation of its regulatory GS domain. They go on to recruit the R-SMADs, SMAD2 and SMAD3. ACVR1B also transducers signals of nodal, GDF-1, and Vg1. Mutations in ACVR1B are associated with pituitary tumors.

Note

For Research Use Only , Not for Diagnostic Use.