

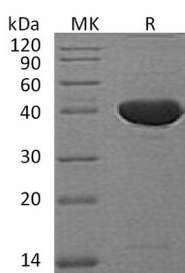
Product Name: Recombinant Mouse Serpin F1
Catalog #: PEM1514



Summary

Name	Serpin F1/PEDF/Pigment epithelium-derived factor
Purity	Greater than 95% as determined by reducing SDS-PAGE
Endotoxin level	<1 EU/μg as determined by LAL test.
Construction	Recombinant Mouse Serine Protease Inhibitor-clade F1 is produced by our E.coli expression system and the target gene encoding Asp43-Thr417 is expressed.
Accession #	P97298
Host	E.coli
Species	Mouse
Predicted Molecular Mass	42 KDa
Formulation	Supplied as a 0.2 μm filtered solution of PBS, pH 7.4.
Shipping	The product is shipped on dry ice/polar packs. Upon receipt, store it immediately at the temperature listed below.
Stability&Storage	Store at ≤-70°C, stable for 6 months after receipt. Store at ≤-70°C, stable for 3 months under sterile conditions after opening. Please minimize freeze-thaw cycles.
Reconstitution	

SDS-PAGE image



Background

Alternative Names	Pigment epithelium-derived factor; Pedf; Sdf3; Caspin; Serpin F1; Stromal cell-derived factor 3
Background	Serpin F1 is secreted Neurotrophic protein and belongs to the serpin family. Serpin F1 Highly expressed in the liver, gastric glandular mucosa and renal tubules. It is also expressed in the brain, heart, lung retina and testes. It induces extensive neuronal differentiation in retinoblastoma cells. It is potent inhibitor of

Product Name: Recombinant Mouse Serpin F1
Catalog #: PEM1514

angiogenesis. As it does not undergo the S (stressed) to R (relaxed) conformational transition characteristic of active serpins, exhibits no serine protease inhibitory activity.

Note

For Research Use Only , Not for Diagnostic Use.