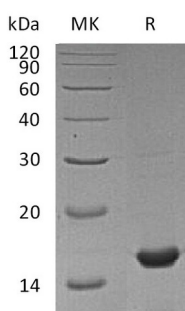


Summary

Name	Peptidyl-prolyl Cis-trans Isomerase A/Cyclophilin A/CYPA
Purity	Greater than 95% as determined by reducing SDS-PAGE
Endotoxin level	<1 EU/μg as determined by LAL test.
Construction	Recombinant Mouse Peptidyl-prolyl Cis-trans Isomerase A is produced by our E.coli expression system and the target gene encoding Met1-Leu164 is expressed.
Accession #	P17742
Host	E.coli
Species	Mouse
Predicted Molecular Mass	18 KDa
Formulation	Supplied as a 0.2 μm filtered solution of PBS, 10% Glycerol, pH 7.4.
Shipping	The product is shipped on dry ice/polar packs. Upon receipt, store it immediately at the temperature listed below.
Stability&Storage	Store at ≤-70°C, stable for 6 months after receipt. Store at ≤-70°C, stable for 3 months under sterile conditions after opening. Please minimize freeze-thaw cycles.
Reconstitution	

SDS-PAGE image



Background

Alternative Names	Peptidyl-prolyl cis-trans isomerase A; PPIase A; Cyclophilin A; Cyclosporin A-binding protein; Rotamase A; SP18; PPIA; CYPA
Background	Peptidyl-prolyl cis-trans isomerase A is a cytoplasm protein which belongs to the cyclophilin-type PPIase family and PPIase A subfamily. Cyclophilins(CyPs) are a

Product Name: Recombinant Mouse CYPA
Catalog #: PEM1303

family of proteins found in organisms ranging from prokaryotes to humans. These molecules exhibit peptidyl-prolyl isomerase activity, suggesting that they influence the conformation of proteins in cells. Cyclophilin A accelerate the folding of proteins. It catalyzes the cis-trans isomerization of proline imidic peptide bonds in oligopeptides. Cyclophilin A can interact with several HIV proteins, including p55 gag, Vpr, and capsid protein, and has been shown to be necessary for the formation of infectious HIV virions.

Note

For Research Use Only , Not for Diagnostic Use.