

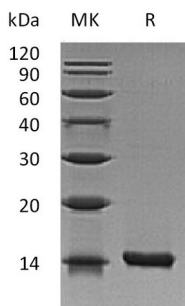
**Product Name: Recombinant Mouse IL-22 (E. coli)**  
**Catalog #: PEM0906**



## Summary

<b>Name</b>	IL-22/Interleukin-22
<b>Purity</b>	Greater than 95% as determined by reducing SDS-PAGE
<b>Endotoxin level</b>	<0.01 EU/μg as determined by LAL test.
<b>Construction</b>	Recombinant Mouse Interleukin-22 is produced by our E.coli expression system and the target gene encoding Leu34-Val179 is expressed.
<b>Accession #</b>	Q9JJY9
<b>Host</b>	E.coli
<b>Species</b>	Mouse
<b>Predicted Molecular Mass</b>	16.7 KDa
<b>Formulation</b>	Lyophilized from a 0.2 μm filtered solution of 20mM PB, 150mM NaCl, pH 7.0.
<b>Shipping</b>	The product is shipped at ambient temperature. Upon receipt, store it immediately at the temperature listed below.
<b>Stability&amp;Storage</b>	Store at ≤-70°C, stable for 6 months after receipt. Store at ≤-70°C, stable for 3 months under sterile conditions after opening. Please minimize freeze-thaw cycles.
<b>Reconstitution</b>	Always centrifuge tubes before opening. Do not mix by vortex or pipetting. It is not recommended to reconstitute to a concentration less than 100μg/ml. Dissolve the lyophilized protein in distilled water. Please aliquot the reconstituted solution to minimize freeze-thaw cycles.

## SDS-PAGE image



## Background

**Product Name: Recombinant Mouse IL-22 (E. coli)**  
**Catalog #: PEM0906**



---

**Alternative Names**

Interleukin-22; IL-22; IL-10-Related T-Cell-Derived-Inducible Factor; IL-TIF; IL-TIF Alpha; Interleukin-22a; IL-22a; IL22; IL22a; Itif; Itifa

**Background**

Interleukin-22 (IL-22) was initially identified as a gene induced by IL-9 in mouse T cells and mast cells. Mouse IL-22 cDNA encodes a 179 amino acid residue protein with a putative 33 amino acid signal peptide that is cleaved to generate a 147 amino acid mature protein that shares approximately 79% and 22% sequence identity with human IL22 and IL10, respectively. IL22 has been shown to activate STAT-1 and STAT-3 in several hepatoma cell lines and up-regulate the production of acute phase proteins. IL-22 is produced by normal mouse T cells upon Con A activation. Mouse IL-22 expression is also induced in various organs upon lipopolysaccharide injection, suggesting that IL-22 may be involved in inflammatory responses. The functional IL-22 receptor complex consists of two receptor subunits, IL-22R (previously an orphan receptor named CRF2-9) and IL-10R $\beta$  (previously known as CRF2-4), belonging to the class II cytokine receptor family.

**Note**

For Research Use Only , Not for Diagnostic Use.