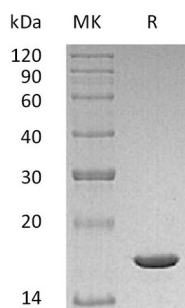


Summary

Name	IL-1 beta/Interleukin-1 Beta/IL-1b/IL-1F2
Purity	Greater than 95% as determined by reducing SDS-PAGE
Endotoxin level	<0.01 EU/ μ g as determined by LAL test.
Construction	Recombinant Mouse Interleukin-1 Beta is produced by our E.coli expression system and the target gene encoding Val118-Ser269 is expressed.
Accession #	P10749
Host	E.coli
Species	Mouse
Predicted Molecular Mass	17.4 KDa
Formulation	Lyophilized from a 0.2 μ m filtered solution of 50mM Tris-HCl, 50mM NaCl, pH 8.0.
Shipping	The product is shipped at ambient temperature. Upon receipt, store it immediately at the temperature listed below.
Stability&Storage	Lyophilized protein should be stored at $\leq -20^{\circ}\text{C}$, stable for one year after receipt. Reconstituted protein solution can be stored at 2-8 $^{\circ}\text{C}$ for 2-7 days. Aliquots of reconstituted samples are stable at $\leq -20^{\circ}\text{C}$ for 3 months.
Reconstitution	Always centrifuge tubes before opening. Do not mix by vortex or pipetting. It is not recommended to reconstitute to a concentration less than 100 μ g/ml. Dissolve the lyophilized protein in distilled water. Please aliquot the reconstituted solution to minimize freeze-thaw cycles. Always centrifuge tubes before opening. Do not mix by vortex or pipetting. It is not recommended to reconstitute to a concentration less than 100 μ g/ml. Dissolve the lyophilized protein in distilled water. Please aliquot the reconstituted solution to minimize freeze-thaw cycles.

SDS-PAGE image



Background

Product Name: Recombinant Mouse IL-1b
Catalog #: PEM0890

Alternative Names Interleukin-1 Beta; IL-1 Beta; Il1b

Background Interleukin-1 (IL-1) designates two proteins, IL-1 α and IL-1 β , which are the products of distinct genes, but recognize the same cell surface receptors. IL-1 α and IL-1 β are structurally related polypeptides that show approximately 25% homology at the amino acid level. Both proteins are produced by a wide variety of cells in response to stimuli such as those produced by inflammatory agents, infections, or microbial endotoxins. The proteins are synthesized as 31 kDa precursors that are subsequently cleaved into proteins with molecular weights of approximately 17.5 kDa. The specific protease responsible for the processing of IL-1 β , designated interleukin 1 β -converting enzyme (ICE), has been described. Mature human and mouse IL-1 β share approximately 75% amino acid sequence identity and human IL-1 β has been found to be active on murine cell lines.

Note

For Research Use Only , Not for Diagnostic Use.