

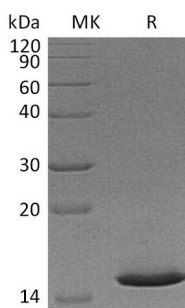
Product Name: Recombinant Mouse Cystatin B (N-6His)
Catalog #: PEM0490



Summary

Name	Cystatin B/CST8
Purity	Greater than 95% as determined by reducing SDS-PAGE
Endotoxin level	<1 EU/μg as determined by LAL test.
Construction	Recombinant Mouse Cystatin-B is produced by our E.coli expression system and the target gene encoding Met1-Phe98 is expressed with a 6His tag at the N-terminus.
Accession #	Q62426
Host	E.coli
Species	Mouse
Predicted Molecular Mass	13.3 KDa
Formulation	Lyophilized from a 0.2 μm filtered solution of 20mM Tris-HCl, 150mM NaCl, pH 8.0.
Shipping	The product is shipped at ambient temperature. Upon receipt, store it immediately at the temperature listed below.
Stability&Storage	Store at ≤-70°C, stable for 6 months after receipt. Store at ≤-70°C, stable for 3 months under sterile conditions after opening. Please minimize freeze-thaw cycles.
Reconstitution	Always centrifuge tubes before opening. Do not mix by vortex or pipetting. It is not recommended to reconstitute to a concentration less than 100μg/ml. Dissolve the lyophilized protein in distilled water. Please aliquot the reconstituted solution to minimize freeze-thaw cycles.

SDS-PAGE image



Background

Product Name: Recombinant Mouse Cystatin B (N-6His)
Catalog #: PEM0490



Alternative Names

CPI-B; CST6cystatin B (liver thiol proteinase inhibitor)10STFBcystatin-B; CSTB; cystatin B (stefin B); Cystatin B; EPM1; Liver thiol proteinase inhibitor; PME; Stefin B; stefin-B

Background

Cystatin B, also called stefin B or liver thiol proteinase inhibitor, is a member of family 1 of the cystatin superfamily. Like Cystatin A, it is an intracellular inhibitor regulating the activities of cysteine proteases of the papain family such as cathepsins B, H and L. Defects in Cystatin-B / CSTB are the cause of progressive myoclonic epilepsy type 1 (EPM1) which is an autosomal recessive disorder characterized by severe, stimulus-sensitive myoclonus and tonic-clonic seizures.

Note

For Research Use Only , Not for Diagnostic Use.