

Product Name: Recombinant Mouse C3a
Catalog #: PEM0433

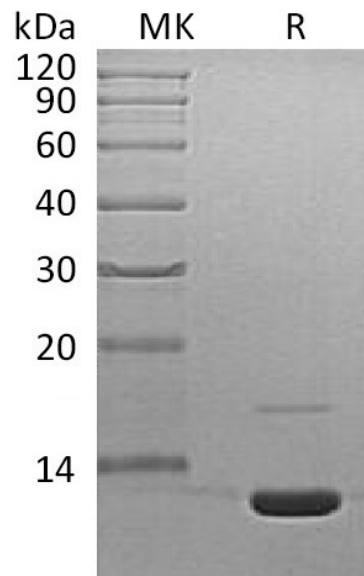


Summary

Name	Complement Component C3a/C3a
Purity	Greater than 95% as determined by reducing SDS-PAGE
Endotoxin level	<1 EU/μg as determined by LAL test.
Construction	Recombinant Mouse Complement Component C3a is produced by our E.coli expression system and the target gene encoding Ser671-Arg748 is expressed.
Accession #	P01027
Host	E.coli
Species	Mouse
Predicted Molecular Mass	9.2 KDa
Formulation	Lyophilized from a 0.2 μm filtered solution of PBS, pH 7.4.
Shipping	The product is shipped at ambient temperature. Upon receipt, store it immediately at the temperature listed below.
Stability&Storage	Lyophilized protein should be stored at ≤ -20°C, stable for one year after receipt. Reconstituted protein solution can be stored at 2-8°C for 2-7 days. Aliquots of reconstituted samples are stable at ≤ -20°C for 3 months.
Reconstitution	Always centrifuge tubes before opening. Do not mix by vortex or pipetting. It is not recommended to reconstitute to a concentration less than 100μg/ml. Dissolve the lyophilized protein in distilled water. Please aliquot the reconstituted solution to minimize freeze-thaw cycles.

SDS-PAGE image

Product Name: Recombinant Mouse C3a
Catalog #: PEM0433



Alternative Names

Complement Component C3a; Anaphylatoxin; C3a

Background

Complement is defined as key part of innate immunity and as the first line of defense in the fight against invading pathogens. Complement 3 (C3) is the most abundant component of the complement cascade and the convergent point for all three major complement activation pathways: namely classical, alternative and mannose-binding lectin pathways. Complement activation leads to the formation of the C3 convertase, which cleaves C3 into the key effector molecules, C3a (anaphylatoxin) and C3b (opsonin) which then drive microbe removal. By binding to C3a receptor (C3aR), C3a exhibits potent anaphylatoxin activity, including increased vascular permeability, triggering degranulation of mast cells, inflammation, and activating leukocytes.

Note

For Research Use Only , Not for Diagnostic Use.