

**Product Name: Recombinant Mouse CCL21**  
**Catalog #: PEM0263**

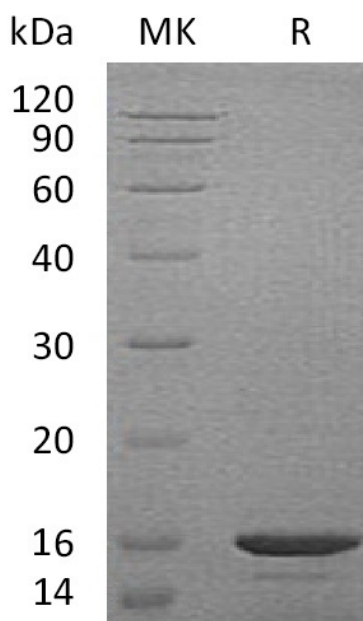


## Summary

<b>Name</b>	CCL21/6Ckine
<b>Purity</b>	Greater than 95% as determined by reducing SDS-PAGE
<b>Endotoxin level</b>	<1 EU/μg as determined by LAL test.
<b>Construction</b>	Recombinant Mouse C-C Motif Chemokine 21a is produced by our E.coli expression system and the target gene encoding Ser24-Gly133 is expressed.
<b>Accession #</b>	P84444
<b>Host</b>	E.coli
<b>Species</b>	Mouse
<b>Predicted Molecular Mass</b>	12.1 KDa
<b>Formulation</b>	Lyophilized from a 0.2 μm filtered solution of PBS, pH 7.4.
<b>Shipping</b>	The product is shipped at ambient temperature. Upon receipt, store it immediately at the temperature listed below.
<b>Stability&amp;Storage</b>	Lyophilized protein should be stored at ≤ -20°C, stable for one year after receipt. Reconstituted protein solution can be stored at 2-8°C for 2-7 days. Aliquots of reconstituted samples are stable at ≤ -20°C for 3 months.
<b>Reconstitution</b>	Always centrifuge tubes before opening. Do not mix by vortex or pipetting. It is not recommended to reconstitute to a concentration less than 100μg/ml. Dissolve the lyophilized protein in distilled water. Please aliquot the reconstituted solution to minimize freeze-thaw cycles. Always centrifuge tubes before opening. Do not mix by vortex or pipetting. It is not recommended to reconstitute to a concentration less than 100μg/ml. Dissolve the lyophilized protein in distilled water. Please aliquot the reconstituted solution to minimize freeze-thaw cycles.

## SDS-PAGE image

**Product Name: Recombinant Mouse CCL21**  
**Catalog #: PEM0263**



### Alternative Names

C-C Motif Chemokine 21a; 6CKine; Beta-Chemokine Exodus-2; Small-Inducible Cytokine A21a; Thymus-Derived Chemotactic Agent 4; TCA4; Ccl21a; Scya21; Scya21a

### Background

C-C Motif Chemokine 21a (CCL21a) is a small secreted cytokine that belongs to the intercrine beta (CC chemokine) family. Mouse CCL21 cDNA encodes a 133 amino acid residue protein with a 23 residue signal peptide that is cleaved to generate the 110 residue mature protein. Mouse CCL21 has three forms while CCL21a has Ser-65. CCL21 elicits its effects by binding to a cell surface chemokine receptor known as CCR7 and CXCR3. Mouse CCL21 inhibits hemopoiesis and stimulates chemotaxis. It has chemotactic function in vitro for thymocytes and activated T-cells, but not for B-cells, macrophages, or neutrophils. Mouse CCL21 shows preferential activity towards naive T-cells and may play a role in mediating homing of lymphocytes to secondary lymphoid organs.

### Note

For Research Use Only , Not for Diagnostic Use.