

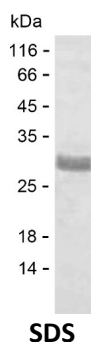
Product Name: Recombinant Human TLDC2 Protein
Catalog #: PEH9933



Summary

Name	TLDC2_HUMAN
Purity	Greater than 85% as determined by reducing SDS-PAGE
Endotoxin level	Please contact with the lab for this information
Tag	C-His
Accession #	A0PJX2
Host	E.coli
Species	Human
Molecular Mass	24 kDa
Buffer	Phosphate buffered saline
Shipping	The product is shipped on dry ice/polar packs. Upon receipt, store it immediately at the temperature listed below.
Stability&Storage	Store at $\leq -70^{\circ}\text{C}$, stable for 6 months after receipt. Store at $\leq -70^{\circ}\text{C}$, stable for 3 months under sterile conditions after opening. Please minimize freeze-thaw cycles.
Sequence	LPSQVEDTLS GEEGNEEEEE EEAAPDPAAA PEDPTVPQLT EASQVLSASE IRQLSFHFPP RVTGHPWSLV FCTSRDGFSL QSLYRRMEGC SGPVLLVLRD QDGQIFGAFS SSAIRLSKGF YGTGETFLFS FSPQLKVKW TGSNSFFVKG DLDSLMMGSG SGRFGLWLDG DLFRGGSSPC PTFNNEVLAR QEQFCIQELE

image



Background

Alternative Names TLDC2 domain-containing protein 2 (TBC/LysM-associated domain-containing protein 2)

Note

For Research Use Only , Not for Diagnostic Use

Product Name: Recombinant Human TLDC2 Protein
Catalog #: PEH9933

