

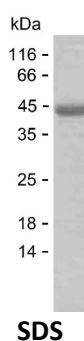
Product Name: Recombinant Human GFM2 Protein
Catalog #: PEH9859



Summary

Name	RRF2M_HUMAN
Purity	Greater than 85% as determined by reducing SDS-PAGE
Endotoxin level	Please contact with the lab for this information
Tag	C-His
Accession #	Q969S9
Host	E.coli
Species	Human
Molecular Mass	38 kDa
Buffer	Phosphate buffered saline
Shipping	The product is shipped on dry ice/polar packs. Upon receipt, store it immediately at the temperature listed below.
Stability&Storage	Store at $\leq -70^{\circ}\text{C}$, stable for 6 months after receipt. Store at $\leq -70^{\circ}\text{C}$, stable for 3 months under sterile conditions after opening. Please minimize freeze-thaw cycles.
Sequence	LIGNDIKSLH SIINPPIAKI RNIGIMAHID AGKTTTTERI LYSGYTRSL GDVDDGDTV DFMAQERERG ITIQSAAVTF DWKGYRVNLI DTPGHVDFTL EVERCLRVLG GAVAVFDASA GVEAQTLTVW RQADKHNIPR ICFLNKMDKT GASFKYAVES IREKLKAKPL LLQLPIGEAK TFKGVVDVVM KEKLLWNCNS NDGKDFERKP LLEMNDPELL KETTEARNAL IEQVADLDDE FADLVLEEF ENFDLLPAEK LQTAHRVTL AQTAVPVLCG SALKNKGIQP LLDAVTMYLP SPEERNYEFL QWYKDDLAL

image



Background

Alternative Names Ribosome-releasing factor 2, mitochondrial (RRF2mt) (Elongation factor G 2, mitochondrial) (EF-G2mt) (mEF-G 2) (Elongation factor G2) (hEFG2)

Product Name: Recombinant Human GFM2 Protein
Catalog #: PEH9859



Note

For Research Use Only , Not for Diagnostic Use