

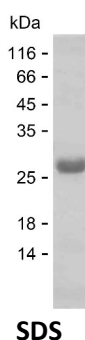
Product Name: Recombinant Human KXD1 Protein
Catalog #: PEH9691



Summary

Name	KXDL1_HUMAN
Purity	Greater than 85% as determined by reducing SDS-PAGE
Endotoxin level	Please contact with the lab for this information
Tag	C-His
Accession #	Q9BQD3
Host	E.coli
Species	Human
Molecular Mass	19 kDa
Buffer	Phosphate buffered saline
Shipping	The product is shipped on dry ice/polar packs. Upon receipt, store it immediately at the temperature listed below.
Stability&Storage	Store at $\leq -70^{\circ}\text{C}$, stable for 6 months after receipt. Store at $\leq -70^{\circ}\text{C}$, stable for 3 months under sterile conditions after opening. Please minimize freeze-thaw cycles.
Sequence	TDDVNAIILA QKNMLDRFEK TNEMLLNFNN LSSARLQQMS ERFLHHTRTL VEMKRDLDSI FRRIRTLK GK LARQHPEAFS HIPEASFLEE EDEDPIPPST TTTIATSEQS TGSCDTSPDT VSPSLSPGFE DLSHVQPGSP AINGRSQTDD

image



Background

Alternative Names KxDL motif-containing protein 1

Note

For Research Use Only , Not for Diagnostic Use