

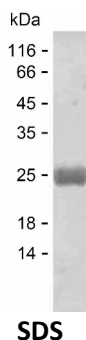
**Product Name: Recombinant Human HSCB Protein**  
**Catalog #: PEH9673**



## Summary

<b>Name</b>	HSC20_HUMAN
<b>Purity</b>	Greater than 85% as determined by reducing SDS-PAGE
<b>Endotoxin level</b>	Please contact with the lab for this information
<b>Tag</b>	C-His
<b>Accession #</b>	Q8IWL3
<b>Host</b>	E.coli
<b>Species</b>	Human
<b>Molecular Mass</b>	25 kDa
<b>Buffer</b>	Phosphate buffered saline
<b>Shipping</b>	The product is shipped on dry ice/polar packs. Upon receipt, store it immediately at the temperature listed below.
<b>Stability&amp;Storage</b>	Store at $\leq -70^{\circ}\text{C}$ , stable for 6 months after receipt. Store at $\leq -70^{\circ}\text{C}$ , stable for 3 months under sterile conditions after opening. Please minimize freeze-thaw cycles.
<b>Sequence</b>	ASQAGSNYPR CWNCGGPWGP GREDRFFCPQ CRALQAPDPT RDYFSLMDCN RSFRVDTAKL QHRYQQQLQRL VHPDFFSQRS QTEKDFSEKH STLVNDAYKT LLAPLSRGLY LLKLHGIEIP ERTDYEMDRQ FLIEIMEINE KLAEAESEAA MKEIESIVKA KQKEFTDNVS SAFEQDDFEE AKEILTKMRY FSNIEEKIKL

## image



## Background

<b>Alternative Names</b>	Iron-sulfur cluster co-chaperone protein HscB (DnaJ homolog subfamily C member 20) [Cleaved into: Iron-sulfur cluster co-chaperone protein HscB, cytoplasmic (C-HSC20); Iron-sulfur cluster co-chaperone protein HscB, mitochondrial]
--------------------------	---

**Product Name: Recombinant Human HSCB Protein**  
**Catalog #: PEH9673**



---

**Note**

For Research Use Only , Not for Diagnostic Use