

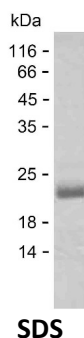
Product Name: Recombinant Human IFT22 Protein
Catalog #: PEH9671



Summary

Name	IFT22_HUMAN
Purity	Greater than 85% as determined by reducing SDS-PAGE
Endotoxin level	Please contact with the lab for this information
Tag	C-His
Accession #	Q9H7X7
Host	E.coli
Species	Human
Molecular Mass	21 kDa
Buffer	Phosphate buffered saline
Shipping	The product is shipped on dry ice/polar packs. Upon receipt, store it immediately at the temperature listed below.
Stability&Storage	Store at $\leq -70^{\circ}\text{C}$, stable for 6 months after receipt. Store at $\leq -70^{\circ}\text{C}$, stable for 3 months under sterile conditions after opening. Please minimize freeze-thaw cycles.
Sequence	PCESGKTVLA NFLTESSDIT EYSPTQGVRI LEFENPHVTS NNKGTGCEFE LWDCGGDAKF ESCWPALMKD AHGVVIVFNA DIPSHRKEME MWYSCFVQQP SLQDTQCMLI AHHKPGSGDD KGSLSPPL NKLKLVHNL EDDPEEIRME FIKYLKSIIN SMESRDREE

image



Background

Alternative Names Intraflagellar transport protein 22 homolog (Rab-like protein 5)

Note

For Research Use Only , Not for Diagnostic Use

Product Name: Recombinant Human IFT22 Protein
Catalog #: PEH9671

