

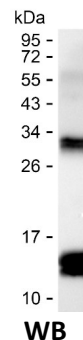
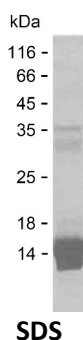
Product Name: Recombinant Human CLPB Protein
Catalog #: PEH9547



Summary

Name	CLPB_HUMAN
Purity	Greater than 85% as determined by reducing SDS-PAGE
Endotoxin level	Please contact with the lab for this information
Tag	C-His
Accession #	Q9H078
Host	E.coli
Species	Human
Molecular Mass	15 kDa
Buffer	Phosphate buffered saline
Shipping	The product is shipped on dry ice/polar packs. Upon receipt, store it immediately at the temperature listed below.
Stability&Storage	Store at $\leq -70^{\circ}\text{C}$, stable for 6 months after receipt. Store at $\leq -70^{\circ}\text{C}$, stable for 3 months under sterile conditions after opening. Please minimize freeze-thaw cycles.
Sequence	AKFIGSPPGY VGHEEGGQLT KKLKQCPNAV VLFDEVDKAH PDVLTIMLQL FDEGRLTDGK GKTIDCKDAI FIMTSNVASD EIAQHALQLR QEALEMSRNR IAENLGDVQI

image



Background

Alternative Names Caseinolytic peptidase B protein homolog (EC 3.6.1.-) (Suppressor of potassium transport defect 3)

Note

For Research Use Only , Not for Diagnostic Use