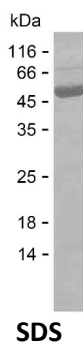


Summary

Name	AL7A1_HUMAN
Purity	Greater than 85% as determined by reducing SDS-PAGE
Endotoxin level	Please contact with the lab for this information
Tag	C-His
Accession #	P49419
Host	E.coli
Species	Human
Molecular Mass	56 kDa
Buffer	Phosphate buffered saline
Shipping	The product is shipped on dry ice/polar packs. Upon receipt, store it immediately at the temperature listed below.
Stability&Storage	Store at $\leq -70^{\circ}\text{C}$, stable for 6 months after receipt. Store at $\leq -70^{\circ}\text{C}$, stable for 3 months under sterile conditions after opening. Please minimize freeze-thaw cycles.
Sequence	LLINQPQYA WLKELGLREE NEGVYNGSWG GRGEVITTYC PANNEPIARV RQASVADYEE TVKKAREAWK IWADIPAPKR GEIVRQIGDA LREKIQVLGS LVSLEMGKIL VEGVGEVQEY VDICYAVGL SRMIGGPILP SERSGHALIE QWNPVGLVGI ITAFNFPVAV YGWNNAIAMI CGNVCLWKGA PTTSLISVAV TKIIAKVLED NKLPGAICSL TCGGADIGTA MAKDERVNLL SFTGSTQVGK QVGLMVQERF GRSLLELGGN NAIIFEDAD LSLVPSALF AAVGTAGQRC TTARRLFIHE SIHDEVVNRL KKAYAQIRVG NPWDPNVLYG PLHTKQAVSM FLGAVVEAKK EGGTVVYGGK VMDRPGNYVE PTIVTGLGHD ASIAHTETFA PILYVFKFKN EEEVFAWNE VKQGLSSIF TKDLGRIFRW LGPKGSDCGI VNVNIPTSGA EIGGAFGG EK HTGGGREGS DAWKQYMRRS TCTINYSKDL

image



Background

Product Name: Recombinant Human ALDH7A1 Protein
Catalog #: PEH9514



Alternative Names

Alpha-aminoadipic semialdehyde dehydrogenase (Alpha-AASA dehydrogenase) (EC 1.2.1.31) (Aldehyde dehydrogenase family 7 member A1) (EC 1.2.1.3) (Antiquitin-1) (Betaine aldehyde dehydrogenase) (EC 1.2.1.8) (Delta1-piperideine-6-carboxylate dehydrogenase) (P6c dehydrogenase)

Note

For Research Use Only , Not for Diagnostic Use