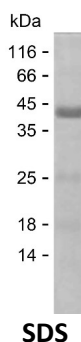


Summary

Name	SSU72_HUMAN
Purity	Greater than 85% as determined by reducing SDS-PAGE
Endotoxin level	Please contact with the lab for this information
Tag	N-SUMO & N-His
Accession #	Q9NP77
Host	E.coli
Species	Human
Molecular Mass	35 kDa
Buffer	Phosphate buffered saline
Shipping	The product is shipped on dry ice/polar packs.Upon receipt, store it immediately at the temperature listed below.
Stability&Storage	Store at $\leq -70^{\circ}\text{C}$, stable for 12 months after receipt.Store at $\leq -70^{\circ}\text{C}$, stable for 3 months under sterile conditions after opening. Please minimize freeze-thaw cycles.
Sequence	VCSSNQNRSM EAHNILSKRG FSVRSFGTGT HVKLPGPAPD KPNVYDFKTT YDQMYNDLLR KDKELYTQNG ILHMLDRNKR IKPRPERFQN CKDLFDLILT CEERVYDQVV EDLNSREQET CQPVHVVNVD IQDNHEEATL GAFLICELCQ CIQHTEDMEN EIDELLQEFE

image



Background

Alternative Names	RNA polymerase II subunit A C-terminal domain phosphatase SSU72 (CTD phosphatase SSU72) (EC 3.1.3.16)
--------------------------	---

Note

For Research Use Only , Not for Diagnostic Use

Product Name: Recombinant Human SSU72 Protein
Catalog #: PEH9436

