

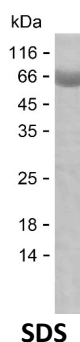
Product Name: Recombinant Human SSU72 Protein
Catalog #: PEH9435



Summary

Name	SSU72_HUMAN
Purity	Greater than 85% as determined by reducing SDS-PAGE
Endotoxin level	Please contact with the lab for this information
Tag	N-MBP & C-His
Accession #	Q9NP77
Host	E.coli
Species	Human
Molecular Mass	64 kDa
Buffer	Phosphate buffered saline
Shipping	The product is shipped on dry ice/polar packs. Upon receipt, store it immediately at the temperature listed below.
Stability&Storage	Store at $\leq -70^{\circ}\text{C}$, stable for 6 months after receipt. Store at $\leq -70^{\circ}\text{C}$, stable for 3 months under sterile conditions after opening. Please minimize freeze-thaw cycles.
Sequence	VCSSNQNRSM EAHNILSKRG FSVRSFGTGT HVKLPGPAPD KPNVYDFKTT YDQMYNDLLR KDELYTQNG ILHMLDRNKR IKRPERFQN CKDLFDLILT CEERVYDQVV EDLNSREQET CQPVHVVNVD IQDNHEEATL GAFLICELCQ CIQHTEDMEN EIDELLQEFE

image



Background

Alternative Names RNA polymerase II subunit A C-terminal domain phosphatase SSU72 (CTD phosphatase SSU72) (EC 3.1.3.16)

Note

For Research Use Only , Not for Diagnostic Use

Product Name: Recombinant Human SSU72 Protein
Catalog #: PEH9435

