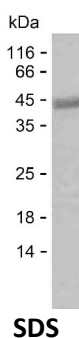


Summary

Name	LSG1_HUMAN
Purity	Greater than 85% as determined by reducing SDS-PAGE
Endotoxin level	Please contact with the lab for this information
Tag	C-His
Accession #	Q9H089
Host	E.coli
Species	Human
Molecular Mass	38 kDa
Buffer	Phosphate buffered saline
Shipping	The product is shipped on dry ice/polar packs. Upon receipt, store it immediately at the temperature listed below.
Stability&Storage	Store at $\leq -70^{\circ}\text{C}$, stable for 6 months after receipt. Store at $\leq -70^{\circ}\text{C}$, stable for 3 months under sterile conditions after opening. Please minimize freeze-thaw cycles.
Sequence	AEKDNFLEWR RQLVRLEEEQ KLILTPFERN LDFWRQLWRV IERSDIVVQI VDARNPLLFR CEDLECYVKE MDANKENVIL INKADLLTAE QRSAWAMYFE KEDVKVIFWS ALAGAIPLNG DSEEEANRDD RQSNTTKFGH SSFDQAEISH SESEHLPARD SPULSENPPT DEDDSEYEDC PEEEEDDWQT CSEEDGPKEE DCSQDWKESS TADSEARSRK TPQKRQIHNF SHLVSKQELL ELFKELHTGR KVKDQGQLTVG LVGYPNVGKS STINTIMGNK KVSVSATPGH TKHFQTLYVE PGLCLDCPG

image



Background

Alternative Names Large subunit GTPase 1 homolog (hLsg1) (EC 3.6.1.-)

Product Name: Recombinant Human LSG1 Protein
Catalog #: PEH9406



Note

For Research Use Only , Not for Diagnostic Use