

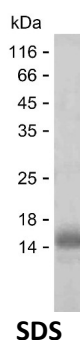
Product Name: Recombinant Human RFFL Protein
Catalog #: PEH9331



Summary

Name	RFFL_HUMAN
Purity	Greater than 85% as determined by reducing SDS-PAGE
Endotoxin level	Please contact with the lab for this information
Tag	C-His
Accession #	Q8WZ73
Host	E.coli
Species	Human
Molecular Mass	11 kDa
Buffer	Phosphate buffered saline
Shipping	The product is shipped on dry ice/polar packs. Upon receipt, store it immediately at the temperature listed below.
Stability&Storage	Store at $\leq -70^{\circ}\text{C}$, stable for 6 months after receipt. Store at $\leq -70^{\circ}\text{C}$, stable for 3 months under sterile conditions after opening. Please minimize freeze-thaw cycles.
Sequence	EDETQSIDSE DSFVPGRRAS LSDLTDLEDI EGLTVRQLKE ILARNFVNYK GCCEKWELME RVTRLYKDQK GLQHLVSGAE

image



Background

Alternative Names	E3 ubiquitin-protein ligase rififylin (EC 2.3.2.27) (Caspase regulator CARP2) (Caspases-8 and -10-associated RING finger protein 2) (CARP-2) (FYVE-RING finger protein Sakura) (Fring) (RING finger and FYVE-like domain-containing protein 1) (RING finger protein 189) (RING finger protein 34-like) (RING-type E3 ubiquitin transferase rififylin)
--------------------------	---

Note

Product Name: Recombinant Human RFFL Protein
Catalog #: PEH9331



For Research Use Only , Not for Diagnostic Use