

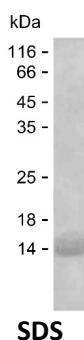
Product Name: Recombinant Human PPM1E Protein
Catalog #: PEH9327



Summary

Name	PPM1E_HUMAN
Purity	Greater than 85% as determined by reducing SDS-PAGE
Endotoxin level	Please contact with the lab for this information
Tag	C-His
Accession #	Q8WY54
Host	E.coli
Species	Human
Molecular Mass	12 kDa
Buffer	Phosphate buffered saline
Shipping	The product is shipped on dry ice/polar packs. Upon receipt, store it immediately at the temperature listed below.
Stability&Storage	Store at $\leq -70^{\circ}\text{C}$, stable for 6 months after receipt. Store at $\leq -70^{\circ}\text{C}$, stable for 3 months under sterile conditions after opening. Please minimize freeze-thaw cycles.
Sequence	SDWTENSFQG GQEDGGDDKE NHGECKRPWP QHQCSAPADL GYDGRVDSFT DRTSLSPGSQ INVLEDPGYL DLTQIEASKP HSAQFLPVE

image



Background

Alternative Names	Protein phosphatase 1E (EC 3.1.3.16) (Ca(2+)/calmodulin-dependent protein kinase phosphatase N) (CaMKP-N) (CaMKP-nucleus) (CaMKN) (Partner of PIX 1) (Partner of PIX-alpha) (Partner of PIXA)
--------------------------	-----------------------------------------------------------------------------------------------------------------------------------------------------------------------------------------------

Note

For Research Use Only , Not for Diagnostic Use