

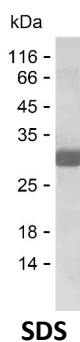
Product Name: Recombinant Human CELF5 Protein
Catalog #: PEH9292



Summary

| | |
|------------------------------|---|
| Name | CELF5_HUMAN |
| Purity | Greater than 85% as determined by reducing SDS-PAGE |
| Endotoxin level | Please contact with the lab for this information |
| Tag | C-His |
| Accession # | Q8N6W0 |
| Host | E.coli |
| Species | Human |
| Molecular Mass | 28 kDa |
| Buffer | Phosphate buffered saline |
| Shipping | The product is shipped on dry ice/polar packs. Upon receipt, store it immediately at the temperature listed below. |
| Stability&Storage | Store at $\leq -70^{\circ}\text{C}$, stable for 6 months after receipt. Store at $\leq -70^{\circ}\text{C}$, stable for 3 months under sterile conditions after opening. Please minimize freeze-thaw cycles. |
| Sequence | RQQQLLQPR PSPVGSSGPE PPGGQPDGMK DLDAIKLFVG QIPRHLDEKD LKPLFEQFGR IYELTVLKDP YTGMLHGCAF LTYCARDSAI KAQTALHEQK TLPGMARPIQ VKPADSESRG GRDRKLFVGM LNKQQSEEDV LRLFQPGVI DECTVLRGPD GSSKGCAFVK FSSHTEAQAA IHALHGSQTM PGASSSLVVK FADTDKERTL RRMQQMVGQL GILTPSLTLP FSPYSAYAQA |

image



Background

Alternative Names CUGBP Elav-like family member 5 (CELF-5) (Bruno-like protein 5) (CUG-BP- and ETR-3-like factor 5) (RNA-binding protein BRUNOL-5)

Note

Product Name: Recombinant Human CELF5 Protein
Catalog #: PEH9292



For Research Use Only , Not for Diagnostic Use