

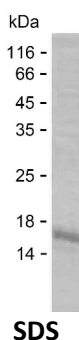
Product Name: Recombinant Human PLA2G4D Protein
Catalog #: PEH9258



Summary

Name	PA24D_HUMAN
Purity	Greater than 85% as determined by reducing SDS-PAGE
Endotoxin level	Please contact with the lab for this information
Tag	C-His
Accession #	Q86XP0
Host	E.coli
Species	Human
Molecular Mass	13 kDa
Buffer	Phosphate buffered saline
Shipping	The product is shipped on dry ice/polar packs. Upon receipt, store it immediately at the temperature listed below.
Stability&Storage	Store at $\leq -70^{\circ}\text{C}$, stable for 12 months after receipt. Store at $\leq -70^{\circ}\text{C}$, stable for 3 months under sterile conditions after opening. Please minimize freeze-thaw cycles.
Sequence	EEELDVEFLM EETSDRPENL ITNKVIVARE LSCLDVHLDG TGSTAVVADQ DKLELELVLK GSYEDTQTSF LGTASAFRFH YMAALETLS GRLRSSRSNG

image



Background

Alternative Names Cytosolic phospholipase A2 delta (cPLA2-delta) (EC 3.1.1.4) (Phospholipase A2 group IVD)

Note

For Research Use Only , Not for Diagnostic Use