

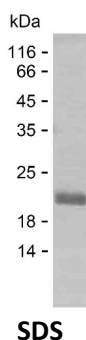
Product Name: Recombinant Human CEP162 Protein
Catalog #: PEH9209



Summary

Name	CE162_HUMAN
Purity	Greater than 85% as determined by reducing SDS-PAGE
Endotoxin level	Please contact with the lab for this information
Tag	C-His
Accession #	Q5TB80
Host	E.coli
Species	Human
Molecular Mass	18 kDa
Buffer	Phosphate buffered saline
Shipping	The product is shipped on dry ice/polar packs. Upon receipt, store it immediately at the temperature listed below.
Stability&Storage	Store at $\leq -70^{\circ}\text{C}$, stable for 12 months after receipt. Store at $\leq -70^{\circ}\text{C}$, stable for 3 months under sterile conditions after opening. Please minimize freeze-thaw cycles.
Sequence	LLDKDALRLR EANEEIEKLLK LEIEKLKAEK GNPSIRQKIR LKDKAADAKK IQDLERQVKE MEGILKRRYP NSLPALILAA SAAGDVTVDKN TVEFMKRIK KLEADLEGKD EDAKSLRTM EQQFQKMKIQ YEQRLQQEQ

image



Background

Alternative Names Centrosomal protein of 162 kDa (Cep162) (Protein QN1 homolog)

Note

For Research Use Only , Not for Diagnostic Use