

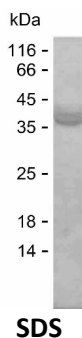
Product Name: Recombinant Human RILPL1 Protein
Catalog #: PEH9192



Summary

Name	RIPL1_HUMAN
Purity	Greater than 85% as determined by reducing SDS-PAGE
Endotoxin level	Please contact with the lab for this information
Tag	C-His
Accession #	Q5EBL4
Host	E.coli
Species	Human
Molecular Mass	34 kDa
Buffer	Phosphate buffered saline
Shipping	The product is shipped on dry ice/polar packs. Upon receipt, store it immediately at the temperature listed below.
Stability&Storage	Store at $\leq -70^{\circ}\text{C}$, stable for 6 months after receipt. Store at $\leq -70^{\circ}\text{C}$, stable for 3 months under sterile conditions after opening. Please minimize freeze-thaw cycles.
Sequence	AESALEKNVA ELTVMDVYDI ASLVGHEFER VIDQHGCEAI ARLMPKVVRV LEILEVLVSR HHVAPELDEL RLELDRLRLE RMDRIEKERK HQKELELVED VWRGEAQDLL SQIAQLQEEN KQLMTNLSHK DVNFSEEEFQ KHEGMSEERER QVMKKLKEVV DKQRDEIRAK DRELGLKNED VEALQQQQTR LMKINHDLRH RVTVVEAQGK ALIEQKVELE ADLQTKEQEM GSLRAELGKL RERLQGEHSQ NGEEEPETEP VGEESISDAE

image



Background

Alternative Names RILP-like protein 1 (Rab-interacting lysosomal-like protein 1)

Product Name: Recombinant Human RILPL1 Protein
Catalog #: PEH9192



Note

For Research Use Only , Not for Diagnostic Use