

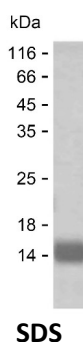
Product Name: Recombinant Human KRR1 Protein
Catalog #: PEH9160



Summary

Name	KRR1_HUMAN
Purity	Greater than 85% as determined by reducing SDS-PAGE
Endotoxin level	Please contact with the lab for this information
Tag	C-His
Accession #	Q13601
Host	E.coli
Species	Human
Molecular Mass	10 kDa
Buffer	Phosphate buffered saline
Shipping	The product is shipped on dry ice/polar packs. Upon receipt, store it immediately at the temperature listed below.
Stability&Storage	Store at $\leq -70^{\circ}\text{C}$, stable for 6 months after receipt. Store at $\leq -70^{\circ}\text{C}$, stable for 3 months under sterile conditions after opening. Please minimize freeze-thaw cycles.
Sequence	ELASGEYFLK ANQKKRQKME AIKAKQAEAI SKRQEERNKA FIPPKEKPIV KPKEASTETK IDVASIKEKV

image



Background

Alternative Names KRR1 small subunit processome component homolog (HIV-1 Rev-binding protein 2) (KRR-R motif-containing protein 1) (Rev-interacting protein 1) (Rip-1)

Note

For Research Use Only , Not for Diagnostic Use