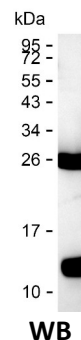
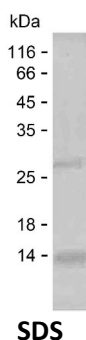


Summary

Name	MTDC_HUMAN
Purity	Greater than 85% as determined by reducing SDS-PAGE
Endotoxin level	Please contact with the lab for this information
Tag	C-His
Accession #	P13995
Host	E.coli
Species	Human
Molecular Mass	23 kDa
Buffer	Phosphate buffered saline
Shipping	The product is shipped on dry ice/polar packs. Upon receipt, store it immediately at the temperature listed below.
Stability&Storage	Store at $\leq -70^{\circ}\text{C}$, stable for 12 months after receipt. Store at $\leq -70^{\circ}\text{C}$, stable for 3 months under sterile conditions after opening. Please minimize freeze-thaw cycles.
Sequence	TIMKPASISE EELLNLINKL NNDDNVDGLL VQLPLPEHID ERRICNAVSP DKDVDGFHVI NVGRMCLDQY SMLPATPWGV WEIKRTGIP TLGKNVVVAG RSKNVGMPIA MLLHTDGAHE RPGGDATVTI SHRYTPKEQL KKHTILADIV ISAAGIPNLI TADMIKEGAA VIDVGINRVH DPVTAKPKLV GDVDFEGVRQ

image



Background

Alternative Names	Bifunctional methylenetetrahydrofolate dehydrogenase/cyclohydrolase, mitochondrial [Includes: NAD-dependent methylenetetrahydrofolate dehydrogenase (EC 1.5.1.15); Methenyltetrahydrofolate cyclohydrolase (EC 3.5.4.9)]
--------------------------	--

Product Name: Recombinant Human MTHFD2 Protein
Catalog #: PEH9120



Note

For Research Use Only , Not for Diagnostic Use