

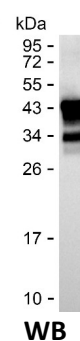
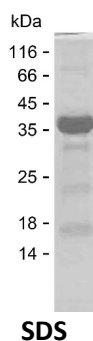
Product Name: Recombinant Human CBX4 Protein
Catalog #: PEH9078



Summary

| | |
|------------------------------|---|
| Name | CBX4_HUMAN |
| Purity | Greater than 85% as determined by reducing SDS-PAGE |
| Endotoxin level | Please contact with the lab for this information |
| Tag | C-His |
| Accession # | O00257 |
| Host | E.coli |
| Species | Human |
| Molecular Mass | 31 kDa |
| Buffer | Phosphate buffered saline |
| Shipping | The product is shipped on dry ice/polar packs. Upon receipt, store it immediately at the temperature listed below. |
| Stability&Storage | Store at $\leq -70^{\circ}\text{C}$, stable for 6 months after receipt. Store at $\leq -70^{\circ}\text{C}$, stable for 3 months under sterile conditions after opening. Please minimize freeze-thaw cycles. |
| Sequence | NVLTGLQDSS TDNRAKLDLG AQGKGQGHQY ELNSKKHHQY QPHSKERAGK PPPPGKSGKY YYQLNSKKHH PYQPDPKMYD LQYQGGHKEA PSPTCPDLGA KSHPPDKWAQ GAGAKGYLGA VKPLAGAAGA PGKGSEKGP NGMMPAPKEA VTGNGIGGKM KIVKNKNKNG RIVIVMSKYM ENGMQAVKIK SGEVAEGEAR SPSHKKRAAD ERHPPADRTF KKAAGAEKK VEAPPKRREE EVSGVSDPQP QDAGSRKLSP TKEAFGEQPL |

image



Background

Alternative Names E3 SUMO-protein ligase CBX4 (EC 2.3.2.-) (Chromobox protein homolog 4) (Polycomb 2 homolog) (Pc2) (hPc2)

Product Name: Recombinant Human CBX4 Protein
Catalog #: PEH9078



Note

For Research Use Only , Not for Diagnostic Use